

PRIMARY PERMITTEE: DEVELOPER'S NAME
STREET ADDRESS
CITY, STATE ZIP
PHONE: (555) 999-9999

24-HOUR CONTACT: JOHN DOE
(XXX)XXX-XXXX

TOTAL SITE AREA = 37.33 ACRES
TOTAL DISTURBED AREA FOR THIS PHASE = 26.55 ACRES
SEE SITE DESCRIPTION NOTES ON SHEET C-44.1.
SEE SITE VICINITY MAP ON SHEET C-44.2.
SEE GENERAL EROSION CONTROL NOTES PERTAINING TO SE
PHASES ON SHEET C-44.3.

SEE SEQUENCE OF CONSTRUCTION NOTES ON SHEET C-4-4.2.
SEE GENERAL NOTES FOR CRITICAL WORK ZONES ON SHEET C-4-4.2.
SEE SITE GRASSING AND VEGETATIVE SCHEDULE ON SHEET C-4-4.2.
SEE SHEETS C-4-4.1 THROUGH C-4-4.5 FOR ALL EROSION CONTROL NOTES.
SEE SHEETS C-4-4.1 TO C-4-4.3 FOR ALL SEDIMENT BASIN CALCULATIONS.
SEE SHEET C-4-4.6 FOR STORM DRAIN EUT VELOCITIES AND STORM DRAIN OUTLET PROTECTION DETAILS.
SEE SHEET C-4-4.7 FOR ALL DIVERSION DUE CALCULATIONS.
NO EXISTING METEOROLOGICAL SITE WILL BE IMPACTED BY THIS DEVELOPMENT. THERE ARE NO PROPOSED METEOROLOGICAL DEVELOPMENT.
SEE SHEET C-4-4.2 FOR ALL STATE WATERS WITHIN 200 FEET OF THE PROPOSED DEVELOPMENT.

BT	Barber Zone	1
CB	Cool Down (with Vegetation)	2
DB	Reluctant Area Stabilization with Mowing Only	3
DB2	Reluctant Area Stabilization with Temporary Seeding	4
DB3	Overlaid Area Stabilization with	5

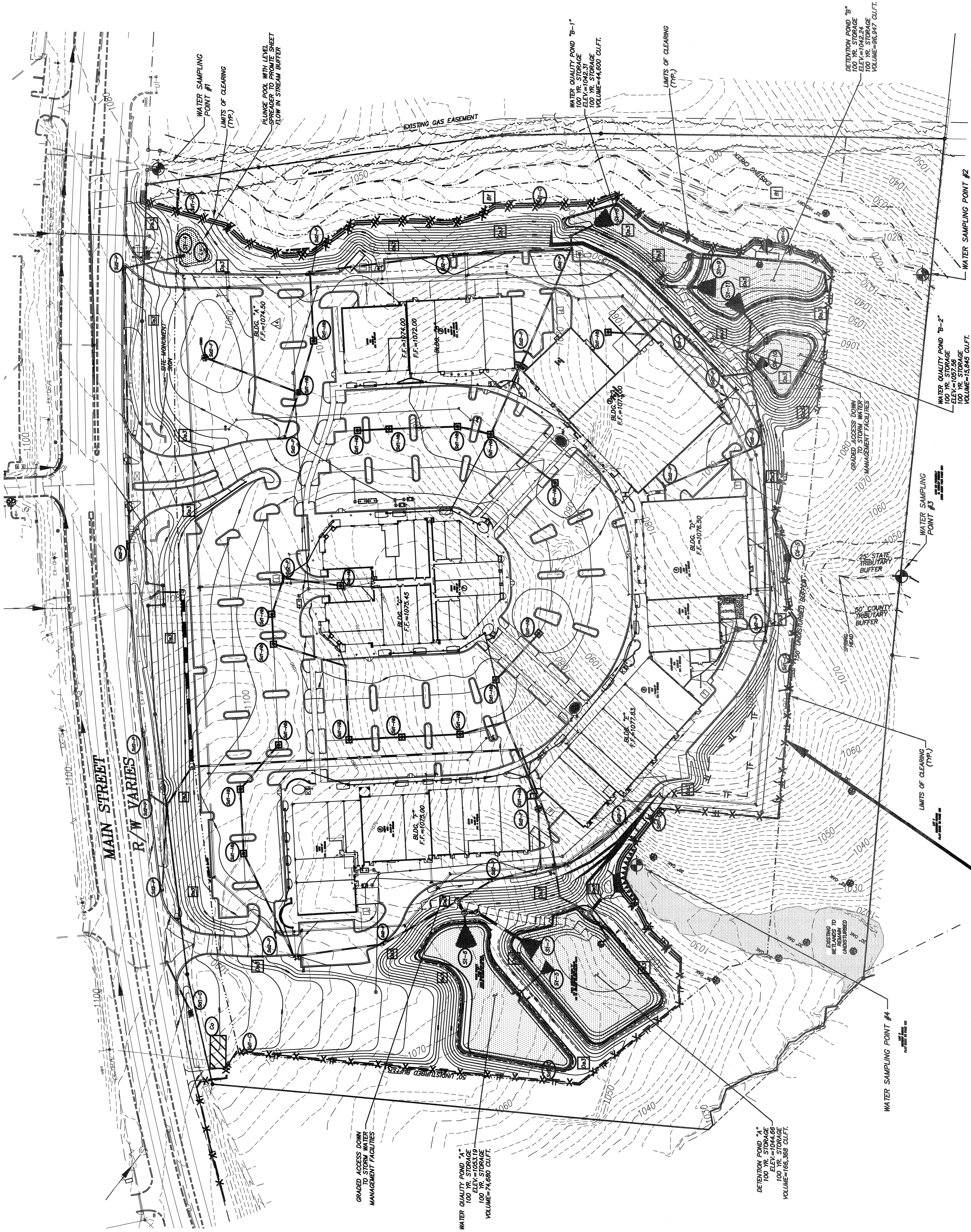
SHOPPING CENTER
A Development by
DEVELOPER'S NAME
LAND LOT 7 OF THE 7TH DISTRICT
CITY OF 7 COUNTY, GEORGIA

Drawn	Designer	Date
SCE	SCE	2009

Sheet Title
E.S.&P. CONTROL
PHASE 3 - FINAL
GRADING PLAN

Drawing Number

C-4c



DISTURBED AREA
=26.55 AC.

WATER SAMPLING POINT

SHADED AREA DENOTES INSTALLATION OF JUTE MATTING

IN CONCENTRATED FLOW AREAS, ALL SLOPES STEEPER THAN 2.5:1 AND WITH HEIGHT 10 FEET OR GREATER, AND CUTS AND FILLS WITHIN STREAM BUFFER, SHALL BE STABILIZED WITH THE APPROPRIATE EROSION CONTROL MATTING OR BLANKET.

