



## **The Georgia Soil & Water Conservation Commission Impaired Streams Project**

These documents were created in response to the State of Georgia's Department of Natural Resources and Environmental Protection Divisions GAR100003 effective 1 August 2008.

In particular reference to: Part III, Section C. Discharges into, or within One Mile Upstream of and within the Same Watershed as, Any Portion of a Biota Impaired Stream Segment.

A complete copy of the document is available on the web here--

[http://gaswcc.georgia.gov/vgn/images/portal/cit\\_1210/49/8/30749588FINAL\\_StormWater\\_NPDES\\_Permit\\_CommonDevelopment\\_GAR100003\\_Y2008.pdf](http://gaswcc.georgia.gov/vgn/images/portal/cit_1210/49/8/30749588FINAL_StormWater_NPDES_Permit_CommonDevelopment_GAR100003_Y2008.pdf).

### **Purpose:**

These documents aim to assist the end user in determining whether a location is in within the one mile limit as referenced by GAR100003. The use of this spatially enabled pdf file is not meant to take the place of a complete site survey nor should it be the sole means of identifying whether a location is or is not within the one mile buffer, within the same watershed, upstream, or downstream. Its purpose is to provide a quick glance to determine if more precise measurements are required to determine proximity to an impaired stream or tributary. Check the Georgia Soil & Water Conservation Commission website for the most recent version of this tool.

### **Overview:**

The GSWCC Impaired Streams Project consists of several documents as described below:

- 1) Impaired Streams file in pdf format.
- 2) Impaired Streams help file in pdf format.

The Impaired Streams file is a spatially enabled pdf (portable document format) which may be used with Adobe Reader version 9.0 and later though the most recent version is preferred. This is a freely available piece of software downloadable via [Adobe - Adobe Reader download](#).

The download is approximately 35 megabytes.

The help file provides general information on the project, metadata, and useful links.

### Using the Impaired Streams Project:

Activate or launch Adobe Reader.

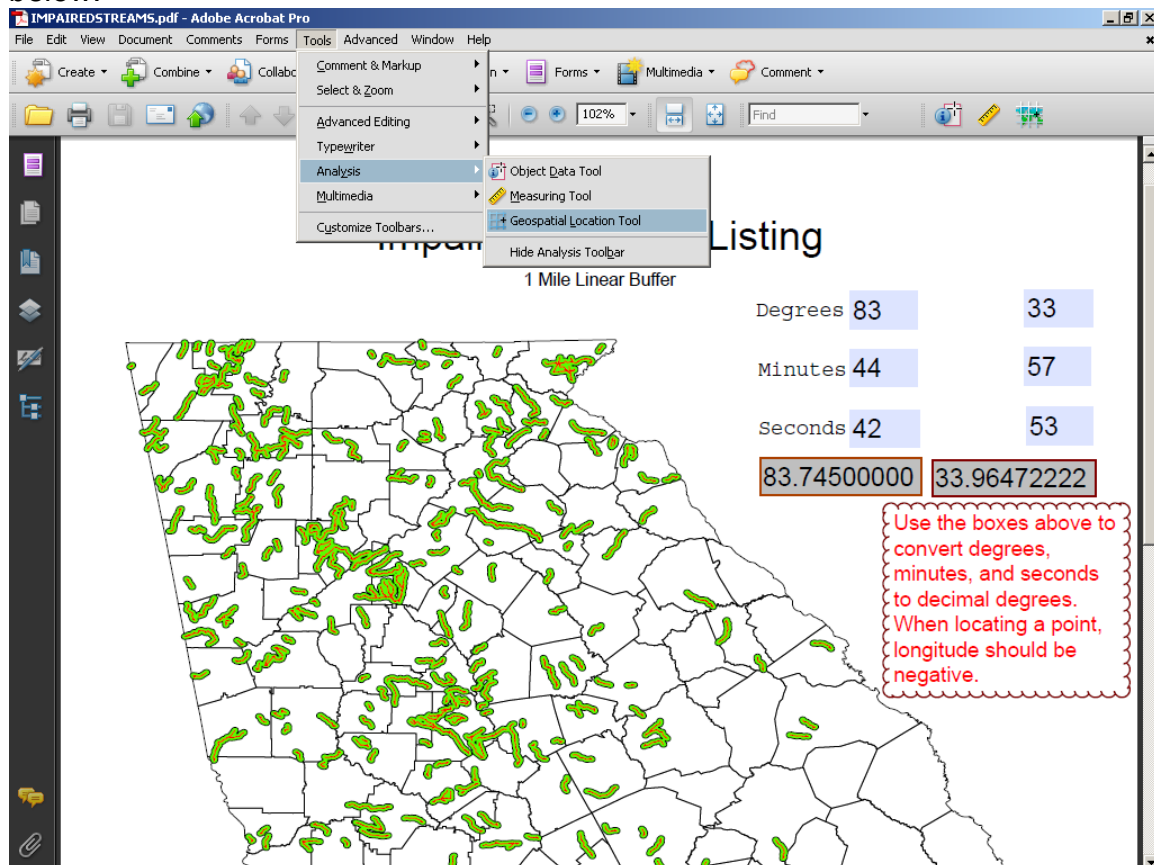
Browse to the area where the Impaired Streams Project is located and open the file IMPAIREDSTREAMS.PDF.

This will bring up a map of the State of Georgia showing the impaired streams along with a one mile buffer surrounding the streams, and the stream flow direction.

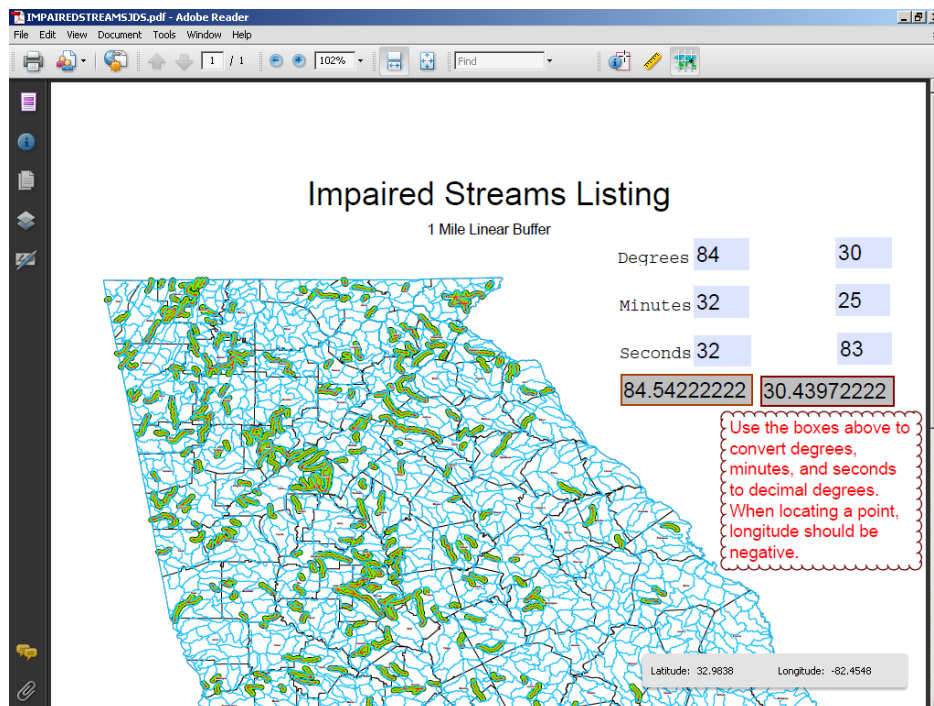
The spatially enabled pdf requires the use of decimal degrees. Most engineering plans which have positional information embedded use degrees, minutes, and seconds. At the upper right are degrees, minutes, and seconds boxes which may be used to convert DMS to DD without having to open or acquire additional software.

Please note that the file is rather sizeable and takes just a while to load.

To locate a position first click tool, analysis, geospatial location tool as shown below.

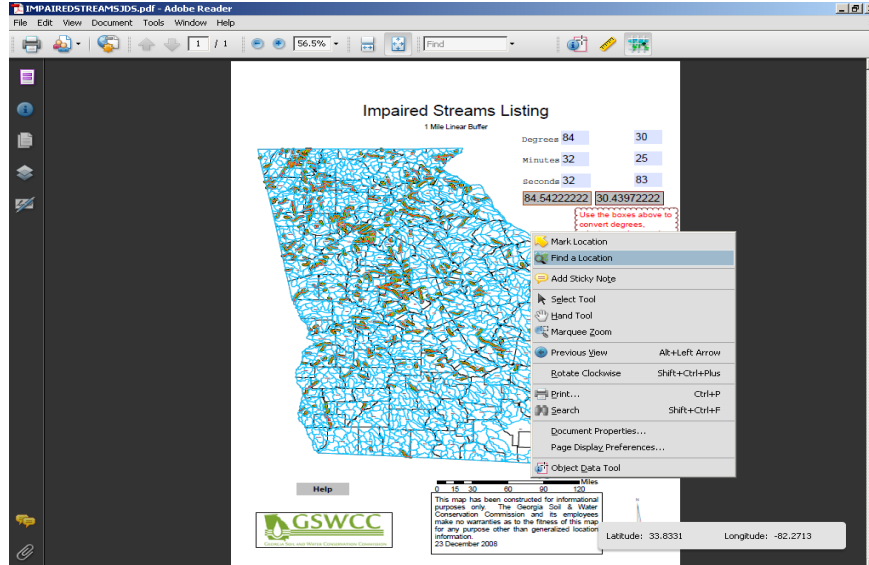


This will launch the embedded locator tool. This tool appears at the bottom right of your screen as shown below. At this point, the cursor should change to a crosshair style for locating points.

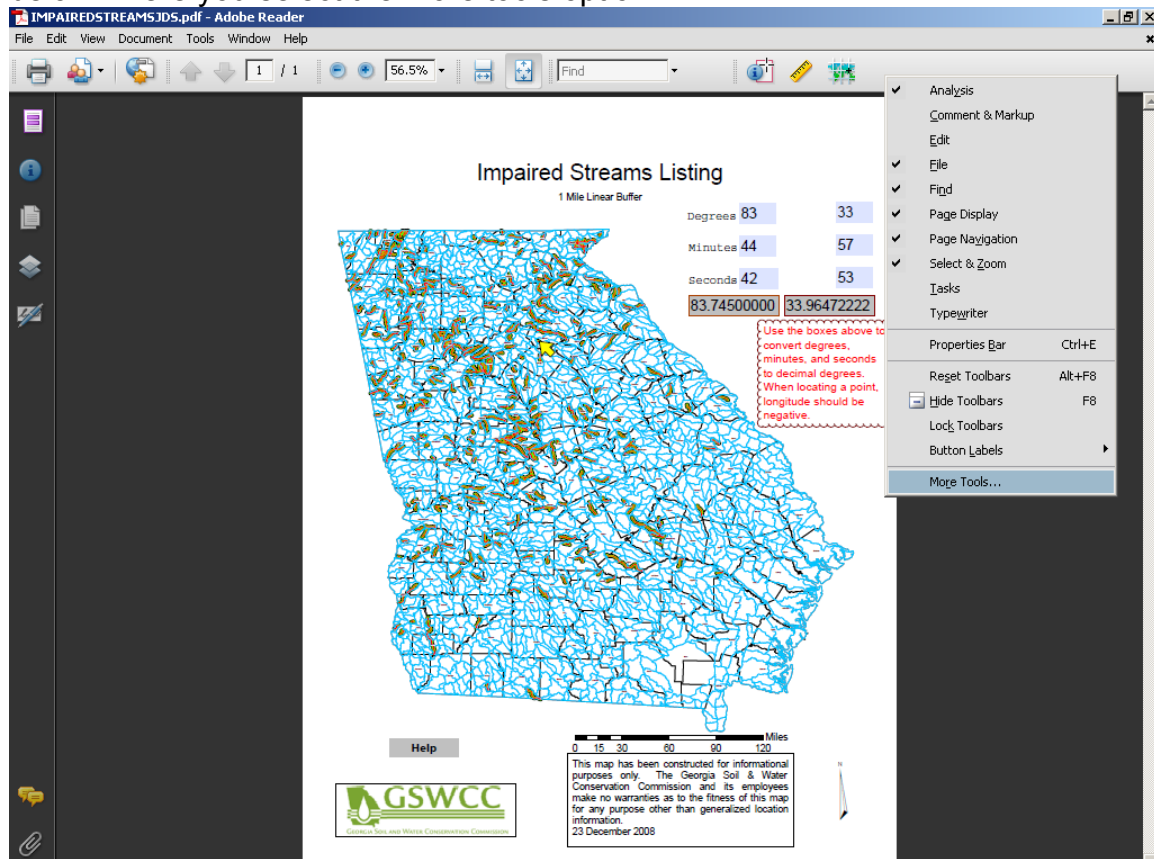


This mode lets you use the cursor to identify latitudes and longitudes via the status box at the bottom right.

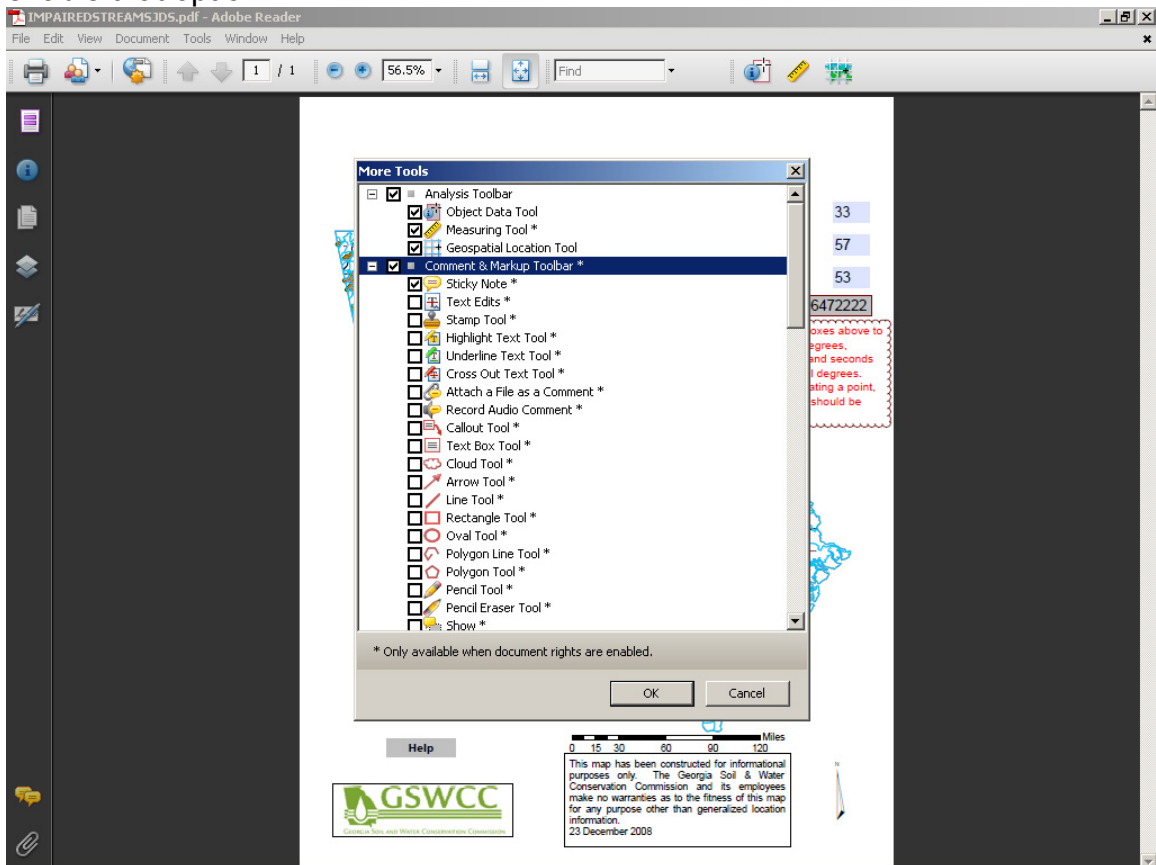
In order to locate a specific geographic coordinate you right click the map as shown and select find a location.



The coordinate box at the bottom right will expand allowing you to enter the latitude and longitude coordinates you wish to locate. You may wish to enable 'sticky notes' while locating coordinates so that you can mark the points and zoom in and out to get a better view. In order to enable sticky notes you simply right click on an empty spot on the tool bar at the top to get the menu as shown below where you select the more tools option.



Under the Comment & Markup Toolbar you would select sticky note in order to enable that option.



Now that the spatially enabled pdf is loaded and the sticky notes are enabled we can locate a point. In this case, we will be locating a point at a latitude of 33° 57' 53" and a longitude of 83° 44' 42".

Since these coordinates are in DMS we need to use the form on the pdf to convert these DMS cords to decimal degrees (DD). Enter those coordinates into the form and the converted values will be displayed underneath. There is no designated column for longitude or latitude, either will work. If the longitude degrees you are locating include a minus '-' sign ignore that for the moment as the conversion tool doesn't require that. It is however very important when entering the coordinates in the locator so remember the negative.

After you enter your DMS and get the results your screen should look similar to the one shown.

The screenshot shows a software window titled "IMPAIREDSTREAMS.JDS.pdf - Adobe Reader". The window contains a map on the left and a coordinate conversion tool on the right. The tool has input fields for Degrees, Minutes, and Seconds, and corresponding output fields for decimal degrees. The input fields are filled with the values 83, 44, and 42 for longitude, and 33, 57, and 53 for latitude. The output fields show the converted decimal degrees: 83.74500000 and 33.96472222. A sticky note is placed over the bottom right of the tool, providing instructions on how to use the tool.

Input	Output
Degrees 83	33
Minutes 44	57
Seconds 42	53
83.74500000	33.96472222

Use the boxes above to convert degrees, minutes, and seconds to decimal degrees. When locating a point, longitude should be negative.

Now you simply left click on the geospatial location tool which should be either on the toolbar at the top or floating over the map. If you don't see it left click on tools, analysis, geospatial location tool.

Moving over the map, simply right click and select find a location. The coordinate box at the bottom expands and you can transfer the coordinates from the form to the respective boxes, remembering to include the '-' for the longitude. Once you've entered the coordinates press enter.

A new highlighted crosshair is generated at those coordinates and the map is zoomed in a bit.

Now is the time you might wish to add a sticky note. Move your mouse so that your crosshair is aligned directly on top of the crosshair which marks your targeted location. Right click your mouse and select add mark location. Now you should have a yellow arrow marking that point. Associated with the arrow is a sticky note which displays those coordinates. You may add additional information to the sticky note as you like. To remove an arrow simply right click on it and select delete. To zoom in further, right click and use marquee zoom.

Also, feel free to check out the layers on the far left to get additional info about the map and the features using the object data tool.



## **GASWCC Impaired Streams Project**

Metadata also available as

### **Metadata:**

- [Identification Information](#)
- [Data Quality Information](#)
- [Spatial Reference Information](#)
- [Distribution Information](#)
- [Metadata Reference Information](#)

---

#### *Identification Information:*

*Citation:*

*Citation Information:*

*Originator:* Georgia Soil & Water Conservation Commission

*Publication Date:* 20081223

*Title:* GASWCC Impaired Streams Project

*Publication Information:*

*Publication Place:* Athens, GA

*Publisher:* Georgia Soil & Water Conservation Commission, Headquarters

*Description:*

*Abstract:*

This dataset was taken from the EPDs website, checked, adjusted and converted into a spatially enabled pdf.

*Purpose:*

To provide general information regarding proximity to impaired streams and tributaries as identified and designated by the Georgia EPD.

*Time Period of Content:*

*Time Period Information:*

*Single Date/Time:*

*Calendar Date:* 20081223

*Currentness Reference:* Publication date

*Status:*

*Progress:* Complete

*Maintenance and Update Frequency:* As needed

*Spatial Domain:*

*Bounding Coordinates:*

*West Bounding Coordinate:* -85.605473

*East Bounding Coordinate:* -80.841958

*North Bounding Coordinate:* 35.001842

*South Bounding Coordinate:* 30.357131

*Keywords:*

*Theme:*



*Theme\_Keyword\_Thesaurus:* EPA GIS Keyword Thesaurus

*Theme\_Keyword:* Agriculture

*Theme\_Keyword:* Biology

*Theme\_Keyword:* Compliance

*Theme\_Keyword:* Conservation

*Theme\_Keyword:* Contaminant

*Theme\_Keyword:* Ecology

*Theme\_Keyword:* Environment

*Theme\_Keyword:* Estuary

*Theme\_Keyword:* Facilities

*Theme\_Keyword:* Ground Water

*Theme\_Keyword:* Hazards

*Theme\_Keyword:* Inspections

*Theme\_Keyword:* Land

*Theme\_Keyword:* Management

*Theme\_Keyword:* Monitoring

*Theme\_Keyword:* Natural Resources

*Theme\_Keyword:* Permits

*Theme\_Keyword:* Regulatory

*Theme\_Keyword:* Sites

*Theme\_Keyword:* Surface Water

*Theme\_Keyword:* Water

*Access\_Constraints:* None.

*Use\_Constraints:*

None. Please check sources, scale, accuracy, currentness and other available information. Please confirm that you are using the most recent copy of both data and metadata. Acknowledgement of the Georgia Soil & Water Conservation Commission would be appreciated.

*Point\_of\_Contact:*

*Contact\_Information:*

*Contact\_Person\_Primary:*

*Contact\_Person:* John Segars

*Contact\_Organization:* Georgia Soil & Water Conservation Commission

*Contact\_Position:* GIS Technical Coordinator

*Contact\_Address:*

*Address\_Type:* mailing and physical address

*Address:* 4310 Lexington Road

*City:* Athens

*State\_or\_Province:* GA

*Postal\_Code:* 30608

*Contact\_Voice\_Telephone:* 706.542.3323

*Contact\_Facsimile\_Telephone:* 706.542.4242

*Contact\_Electronic\_Mail\_Address:* jsegars@gaswcc.org

*Contact\_Instructions:* <<http://www.gaswcc.org>>

*Security\_Information:*

*Security\_Classification\_System:* FIPS Pub 199

*Security\_Classification:* No Confidentiality

*Security\_Handling\_Description:* Standard Technical Controls

---

*Data\_Quality\_Information:*

*Completeness\_Report:* Features represented have not been tested for completeness

*Positional\_Accuracy:*

*Horizontal\_Positional\_Accuracy:*

*Horizontal\_Positional\_Accuracy\_Report:*

Data were collected using methods that are accurate to within 2-5 meters.

*Lineage:*

*Process\_Step:*

*Process\_Description:*

Dataset downloaded from gaepd.org to check for changes and omissions.

*Process\_Date:* 12/22/2008

*Process\_Step:*

*Process\_Description:*

Impaired streams compared to NHD High Resolution dataset and flow direction corrected.

*Process\_Date:* 11/15/2008

*Process\_Step:*

*Process\_Description:* Buffer operation to add one mile buffer to stream reaches.

*Process\_Date:* 11/16/2008

---

*Spatial\_Reference\_Information:*

*Horizontal\_Coordinate\_System\_Definition:*

*Geographic:*

*Latitude\_Resolution:* 0.000001

*Longitude\_Resolution:* 0.000001

*Geographic\_Coordinate\_Units:* Decimal degrees

*Geodetic\_Model:*

*Horizontal\_Datum\_Name:* North American Datum of 1983

*Ellipsoid\_Name:* Geodetic Reference System 1980

*Semi-major\_Axis:* 6378137.000000

*Denominator\_of\_Flattening\_Ratio:* 298.257222

---

*Distribution\_Information:*

*Distributor:*

*Contact\_Information:*

*Contact\_Organization\_Primary:*

*Contact\_Organization:* Georgia Soil & Water Conservation Commission

*Contact\_Person:* John Segars

*Contact\_Position:* GIS Technical Coordinator

*Contact\_Address:*

*Address\_Type:* mailing and physical address

*Address:* 4310 Lexington Road  
*City:* Athens  
*State\_or\_Province:* GA  
*Postal\_Code:* 30608  
*Contact\_Voice\_Telephone:* 706.542.3323  
*Contact\_Facsimile\_Telephone:* 706.542.4242  
*Contact\_Electronic\_Mail\_Address:* jsegars@gaswcc.org  
*Contact\_Instructions:* <<http://www.gaswcc.org>>  
*Resource\_Description:* Live Data and Maps  
*Distribution\_Liability:*

Although these data have been processed successfully on a computer system at the Georgia Soil & Water Conservation Commission, no warranty expressed or implied is made regarding the accuracy or utility of the data on any other system or for general or scientific purposes, nor shall the act of distribution constitute any such warranty. It is also strongly recommended that careful attention be paid to the contents of the metadata file associated with these data to evaluate data set limitations, restrictions or intended use. The Georgia Soil & Water Conservation Commission shall not be held liable for improper or incorrect use of the data described and/or contained herein.

---

*Metadata\_Reference\_Information:*

*Metadata\_Date:* 20081223  
*Metadata\_Future\_Review\_Date:* 20121223  
*Metadata\_Contact:*  
*Contact\_Information:*  
*Contact\_Person\_Primary:*  
*Contact\_Person:* John Segars  
*Contact\_Organization:* Georgia Soil & Water Conservation Commission  
*Contact\_Position:* GIS Technical Coordinator  
*Contact\_Address:*  
*Address\_Type:* mailing and physical address  
*Address:* 4310 Lexington Road  
*City:* Athens  
*State\_or\_Province:* GA  
*Postal\_Code:* 30608  
*Contact\_Voice\_Telephone:* 706.542.3323  
*Contact\_Facsimile\_Telephone:* 706.542.4242  
*Contact\_Electronic\_Mail\_Address:* jsegars@gaswcc.org  
*Contact\_Instructions:* <<http://www.gaswcc.org>>  
*Metadata\_Standard\_Name:* FGDC Content Standard for Digital Geospatial Metadata  
*Metadata\_Standard\_Version:* FGDC-STD-001-1998

## **Georgia's 2008 Integrated 305(b)/303(d) Report (also referred to as Water Quality in Georgia 2006- 2007); GIS Data Set For BIOTA IMPACTED STREAMS ONLY**

Metadata also available as

### **Metadata:**

- [Identification Information](#)
- [Data Quality Information](#)
- [Spatial Data Organization Information](#)
- [Spatial Reference Information](#)
- [Entity and Attribute Information](#)
- [Distribution Information](#)
- [Metadata Reference Information](#)

---

#### *Identification Information:*

*Citation:*

*Citation Information:*

*Originator:*

305(b) Coordinator, Georgia Environmental Protection Division,  
Watershed Protection Branch

*Publication Date:* June 2008

*Title:*

Georgia's 2008 Integrated 305(b)/303(d) Report (also referred to as Water  
Quality in Georgia 2006-2007); GIS Data Set For BIOTA IMPACTED  
STREAMS ONLY

*Edition:* First

*Geospatial Data Presentation Form:* vector digital data

*Publication Information:*

*Publication Place:* Atlanta, Georgia

*Publisher:*

Georgia Environmental Protection Division, Watershed Protection Branch  
*Online Linkage:*

\\DNR132321\C\$\GIS\TMDL\_map\Final\_2008\_303d\Y2008\_305b303d\_  
Final\_BiotaForConstructionPermits.mdb

*Description:*

*Abstract:*

NOTICE: This GIS data set contains only streams or beaches with the criterion violation of Biota Impacted - Fish Community (Bio F) or Biota Impacted - Macroinvertebrate Community (Bio M). This customized GIS data set has been created in support of permitting activity for the NPDES General Permits No. GAR100001, No. GAR100002 and No. GAR100003 for storm water discharges associated with construction activity.

This customized GIS data set was queried and selected out of the complete, state-wide GIS data set for the Year 2008 305(b)/303(d) listed Rivers/Streams, Coastal Streams and Coastal Beaches segments. Again this GIS dataset is NOT the complete, state-wide GIS data set. The complete state-wide GIS data set can be obtained from <http://www.gaepd.com/Documents/305b.html> . The metadata below is from the complete, state-wide GIS dataset and applies to the customized GIS data set.

#### METADATA FOR COMPLETE, STATE-WIDE GIS DATA SET:

This ESRI GIS data set is based on the descriptive locations of the listed water bodies within the Year 2008 Integrated 305(b)/303(d) Report, however, it should not be considered as Georgia's approved list. While reasonable effort has been made to ensure this GIS data set accurately reflects the approved list, if discrepancies are found, the water body information in the .pdf documents mentioned below are to be considered official and supercede the GIS data set.

On June 6th, 2008, the Georgia DNR Environmental Protection Division's Year 2008 Integrated 305(b)/303(d) Report (also referred to as Water Quality in Georgia 2006-2007) and lists were approved by the United States Environmental Protection Agency's (USEPA). The final and official, approved lists of water body classifications for Rivers/Streams, Lakes/Reservoirs, Coastal Streams, Coastal Beaches, and Sounds/Harbors can be found in .pdf format at <http://www.gaepd.com/Documents/305b.html> and in the compressed .zip with this GIS data set.

This GIS data set represents the State of Georgia 2006-2007 assessment of water quality and resulting Year 2008 305(b)/303(d) list of waters prepared in response to Sections 305(b) and 303(d) of the Clean Water Act and in accordance with the USEPA implementing regulations and

guidance. Assessed water bodies are classified as assessment pending, supporting or not supporting their designated uses according to a comparison of water quality monitoring results to water quality standards and other pertinent information. New for the Year 2008 305(b)/303(d) list is the designation of Category Tier levels for each assessed water body. The USEPA is requiring Georgia to use these Category Tier levels beginning with year 2008 and subsequent 305(b)/303(d) reports to USEPA. Please refer to the .pdf file titled "Summary of Changes to the Format of Y2008 305(b)/303(d) List of Waters" at [http://www.gaepd.com/Files\\_PDF/305b/Y2008\\_303d/Y2008\\_Summary\\_of\\_Formatting\\_Changes\\_List.pdf](http://www.gaepd.com/Files_PDF/305b/Y2008_303d/Y2008_Summary_of_Formatting_Changes_List.pdf) or in the compressed .zip with this GIS data set for more information about Tier levels.

This GIS data set is an ESRI polyline shapefile representing Year 2008 305(b)/303(d) listed Rivers/Streams, Coastal Streams and Coastal Beaches segments at a scale of 1:100,000 in Geographic North American Datum 1983 (NAD83). The majority of the GIS data set is based on previous Georgia EPD GIS shapefiles for the 305(b)/303(d) List for the Years 2006, 2004, 2002 and 2000. Georgia's GIS data set for Year 2008 305(b)/303(d) list has been significantly expanded and improved over previous years GIS shapefiles. All new Rivers/Streams and Coastal Streams segments have been created using the National Hydrography Dataset(NHD) Medium Resolution geodatabase feature class. Beach segments were created by Georgia DNR Coastal Resource Division using aerial photography and color IR DOQQs.

When using this GIS dataset, the polylines represent the beginning and end of a listed segment within the state of Georgia. The associated attribute table includes all fields and information within the 305(b)/303(d) list that corresponds to the GIS polyline in addition to USGS Hydrologic Unit Code (HUC) 8 and 10.

*Purpose:*

The purpose of this GIS data set and associated information is to show and describe the extent of the waters in Georgia where water quality standards have assessment pending or has been assessed, and waters are listed as either supporting or not fully supporting their designated uses according to the USEPA's 305(b) and 303(d) guidelines.

The spatial data set is an ESRI polyline shapefile. Attribute information includes reach ID, stream reach name, reach location, major basin name, criterion violated, potential causes, data source, water body type, water uses classification, evaluation, category tier, stream extent, beach extent, extent units, priority year, notes, HUC8, and HUC 10.

*Supplemental Information:*

The source for the information in this data set comes from the Year 2008 Integrated 305(b)/303(d) Report, prepared by Georgia EPD. The list is prepared in response to sections 305(b) and 303(d) of the federal Clean Water Act and in accordance with USEPA implementing regulations and guidance.

Section 305(b) requires that each State prepare and submit to the Administrator of the USEPA a biennial report, which describes water quality conditions of navigable waters across the State. The USEPA provides guidance to the States to establish a framework for consistent reporting across the nation. This report provides an assessment of the water quality conditions in Georgia and includes a description of the nature, extent, and causes of documented water quality problems.

Section 303(d) requires that each State identify those waters within its boundaries for which effluent limitations required by Section 301(b)(1)(A) and Section 301(b)(1)(B) are not stringent enough to implement any water quality standard applicable to such waters. States are then required to establish a total maximum daily load for each pollutant at such a level necessary to implement the applicable water quality standard. Georgia's 305(b)/303(d) list is published biennially as part of the larger publication entitled "Water Quality In Georgia". The 2008 list appears in the 2006 - 2007 edition and is available on <http://www.gaepd.com/Documents/305b.html>.

*Time\_Period\_of\_Content:*

*Time\_Period\_Information:*

*Single\_Date/Time:*

*Calendar\_Date:* 2001 - 2008

*Currentness\_Reference:* publication date

*Status:*

*Progress:* Complete

*Maintenance\_and\_Update\_Frequency:* Biennial

*Spatial\_Domain:*

*Bounding\_Coordinates:*

*West\_Bounding\_Coordinate:* -85.583150

*East\_Bounding\_Coordinate:* -82.003910

*North\_Bounding\_Coordinate:* 34.987600

*South\_Bounding\_Coordinate:* 30.654120

*Keywords:*

*Theme:*

*Theme\_Keyword\_Thesaurus:*

Georgia Environmental Protection Division, Watershed Protection Branch.

*Theme\_Keyword:* Georgia

*Theme\_Keyword:* Georgia Environmental Protection Division

*Theme\_Keyword:* environment



*Theme\_Keyword:* USEPA

*Theme\_Keyword:* water quality assessment

*Theme\_Keyword:* water quality standards

*Theme\_Keyword:* 303(d)

*Theme\_Keyword:* 305(b)

*Theme\_Keyword:* Total Maximum Daily Load

*Place:*

*Place\_Keyword:* Georgia

*Place\_Keyword:* USEPA Region 4

*Place\_Keyword:* Southeast

*Temporal:*

*Temporal\_Keyword:* 2008

*Access\_Constraints:*

The Georgia Environmental Protection Division - Watershed Protection Branch should be acknowledged as the data source in products derived from these data.

*Use\_Constraints:*

This ESRI GIS data set is based on the descriptive locations of the listed water bodies within the Year 2008 Integrated 305(b)/303(d) Report, however, it should not be considered as Georgia's approved list. While reasonable effort has been made to ensure this GIS data set accurately reflects the approved list, if discrepancies are found, the water body information in the .pdf documents mentioned in the metadata abstract are to be considered official and supercede the GIS data set.

Designations of assessment pending, supporting and not supporting are valid for the current time-period and may be changed by Georgia EPD upon additional water quality monitoring and subsequent evaluation. Stream reaches and their conditions may change due to new water quality monitoring results and other pertinent information.

The data set depicts stream segments at a detail suitable for scales of 1:100,000 or smaller.

*Point\_of\_Contact:*

*Contact\_Information:*

*Contact\_Person\_Primary:*

*Contact\_Person:* 305(b) Coordinator

*Contact\_Organization:*

Georgia Environmental Protection Division, Watershed Protection Branch

*Contact\_Position:* 305(b) Coordinator

*Contact\_Address:*

*Address\_Type:* mailing and physical address

*Address:* 4220 International Pkwy, Suite 101

*City:* Atlanta

*State\_or\_Province:* Georgia

*Postal\_Code:* 30354  
*Country:* USA  
*Contact\_Voice\_Telephone:* 404-675-6236  
*Contact\_Facsimile\_Telephone:* 404-675-6244  
*Contact\_Electronic\_Mail\_Address:* Michael\_Basmajian@dnr.state.ga.us  
*Data\_Set\_Credit:*  
Georgia Environmental Protection Division, Watershed Protection Branch  
*Security\_Information:*  
*Security\_Classification:* Unclassified  
*Native\_Data\_Set\_Environment:*  
Microsoft Windows XP Version 5.1 (Build 2600) Service Pack 2; ESRI  
ArcCatalog 9.1.0.780  
*Cross\_Reference:*  
*Citation\_Information:*  
*Originator:*  
Georgia Environmental Protection Division, Watershed Protection Branch  
*Publication\_Date:* 2008  
*Title:*  
Georgia's 2008 Integrated 305(b)/303(d) Report (also referred to as Water  
Quality in Georgia 2006-2007)  
*Geospatial\_Data\_Presentation\_Form:* vector digital data  
*Other\_Citation\_Details:*  
The GIS data set represents the State of Georgia 2006-2007 assessment of  
water quality and resulting Year 2008 305(b)/303(d) lists of waters  
prepared in response to Sections 305(b) and 303(d) of the Clean Water Act  
and in accordance with the United States Environmental Protection  
Agency's (USEPA) implementing regulations and guidance. Waterbodies  
are classified as assessment pending, supporting or not supporting their  
designated uses according to a comparison of water quality monitoring  
results to water quality standards and other pertinent information.  
*Online\_Linkage:* <http://www.gaepd.org/Documents/305b.html>

---

*Data\_Quality\_Information:*

*Attribute\_Accuracy:*

*Attribute\_Accuracy\_Report:*

Entity attributes were checked with information contained in the Georgia  
Year 2008 305(b)/303(d) List. Tests were completed to verify attribute  
consistency.

*Logical\_Consistency\_Report:*

This data set is believed to be logically consistent though no tests were  
performed. Line geometry is topologically clean in ArcGIS ArcINFO 9.1.

*Completeness\_Report:*

The data are complete for the Georgia Year 2008 305(b)/303(d) List. This  
data set contains only the coastal stream, coastal beaches and stream  
reaches in Georgia which were monitored and assessed in accordance  
with Federal 305(b)/303(d) requirements. This is not a complete stream

coverage for the State of Georgia. Stream reaches not having an assessment designation of assessment pending, supporting or not supporting were not included in the spatial database.

*Positional\_Accuracy:*

*Horizontal\_Positional\_Accuracy:*

*Horizontal\_Positional\_Accuracy\_Report:*

Resolution as reported. Based on U.S. Geological Survey 1:100,000-scale digital line graph (DLG) hydrography data with horizontal accuracy of 50 meters or 167 feet.

*Vertical\_Positional\_Accuracy:*

*Vertical\_Positional\_Accuracy\_Report:* N/A

*Lineage:*

*Source\_Information:*

*Source\_Citation:*

*Citation\_Information:*

*Originator:*

305(b) Coordinator - Environmental Protection Division - Watershed Protection Branch

*Publication\_Date:* June 2008

*Title:*

Georgia's 2008 Integrated 305(b)/303(d) Report (also referred to as Water Quality in Georgia 2006-2007)

*Edition:* First

*Geospatial\_Data\_Presentation\_Form:* tabular digital data

*Publication\_Information:*

*Publication\_Place:* Atlanta, Georgia

*Publisher:*

Georgia Department of Natural Resources, Environmental Protection Division - Watershed Protection Branch

*Online\_Linkage:* <<http://www.gaepd.org/Documents/305b.html>>

*Source\_Time\_Period\_of\_Content:*

*Time\_Period\_Information:*

*Single\_Date/Time:*

*Calendar\_Date:* 2008

*Source\_Currentness\_Reference:* publication date

*Source\_Information:*

*Source\_Citation:*

*Citation\_Information:*

*Originator:* Musser, Jonathan W., U.S. Geological Survey

*Publication\_Date:* 1996

*Title:* DNR305B Stream Reaches

*Edition:* 1.0

*Geospatial\_Data\_Presentation\_Form:* vector digital data

*Series\_Information:*

*Series\_Name:* Digital Data Series

*Publication\_Information:*

*Publication\_Place:* Atlanta, GA

*Publisher:*

U.S. Geological Survey and Georgia Department of Natural Resources

*Other\_Citation\_Details:* Scale is 1:100,000

*Source\_Information:*

*Source\_Citation:*

*Citation\_Information:*

*Originator:* Alhadeff, Jack, U.S. Geological Survey

*Publication\_Date:* 1996

*Title:* USGS DLG Hydrography 1:100,000

*Geospatial\_Data\_Presentation\_Form:* vector digital data

*Publication\_Information:*

*Publication\_Place:* Atlanta, GA

*Publisher:* U.S. Geological Survey

*Other\_Citation\_Details:* Scale is 1:100,000

*Source\_Time\_Period\_of\_Content:*

*Source\_Currentness\_Reference:* publication date

*Source\_Information:*

*Source\_Citation:*

*Citation\_Information:*

*Originator:* USGS

*Title:* National Hydrography Dataset (NHD) Medium Resolution

*Geospatial\_Data\_Presentation\_Form:* vector digital data

*Other\_Citation\_Details:* Scale is 1:100,000

*Online\_Linkage:* <http://nhd.usgs.gov/>

*Process\_Step:*

*Process\_Description:*

Process Step 1: Creation of Georgia 2000 305(b)/303(d) List Map

The State of Georgia 2000 305(b)/303(d) List map was developed from an earlier map created by the U.S. Geological Survey Center for Spatial Analysis and Technology (see source citation for DNR305b Stream Reaches).

Modifications were made by the Georgia Department of Natural Resources Environmental Protection Division (GAEPD) to the existing map to create a new map from which the Georgia 305(b) Water Quality Assessment for the Year 2000 map was developed. Modifications included:

Stream reaches not having an assessment designation of supporting, partially supporting, or not supporting (not evaluated) were deleted from the spatial database.

Multiple DLG stream segments representing a single 305(b) listed stream reach were combined into a single stream segment to reduce the size of the database and improve its utility.

All listed stream reaches depicted using a left and right edge of water were represented by a single segment corresponding to one of the edges or the centerline.

Water bodies such as lakes and estuaries represented by polygonal entities were added to the coverage. The polygons were converted to lines in order for them to reside in the same ArcView line theme as the stream reaches.

The database field structure was modified to correspond more closely to the 305(b)/303(d) list. After modifying the original map, stream reaches were added to the modified map to reflect the current 2000 305(b) list of waters. Stream reaches were added using the following methods:

305(b) stream reaches were identified and located using location description information as well as available marked Georgia Department of Transportation county road paper maps.

Using the stream reach location, a line entity was added to the 305(b) map. In cases where there were DLG segments to represent the 305(b) stream reach, these line segments were directly transferred from the DLG coverage to the 305(b) map coverage, and multiple DLG segments were combined into one segment representing the 305(b) reach. In cases where DLG segments were not available to represent the stream reach, primarily in cases of smaller streams, the stream reach was digitized into the map in the approximate location identified.

For water bodies such as lakes and estuaries, DLG segments were used, when available, to define the boundaries of water bodies. In some instances, particularly estuaries, when DLG segments were not available to define the water body boundary, an ellipse was placed in the approximate location of the listed water bodies.

The work performed to modify and update the original map was done using MapInfo software. The final map was converted from the MapInfo file format to the ArcView shapefile format using MapInfo's Universal Translator software.

For database management purposes unique reach identifiers were assigned to each 305(b) listed water bodies according to the 10-digit hydrologic unit containing the downstream limit of the segment.

The 305(b) map coverage database was checked against Georgia's published water quality assessment 305(b) list for the year 2000. For some listed waters the Actions to Alleviate database field has been truncated due to ArcView 3.x 254 character field length limit.

*Process\_Date:* December 2000

*Process\_Contact:*

*Contact\_Information:*

*Contact\_Person\_Primary:*

*Contact\_Person:* 305(b) Coordinator

*Contact\_Organization:*

Georgia Environmental Protection Division - Watershed Protection Branch

*Contact\_Address:*

*Address\_Type:* mailing and physical address

*Address:* 4220 International Parkway, Suite 101

*City:* Atlanta

*State\_or\_Province:* Georgia

*Postal\_Code:* 30354

*Country:* USA

*Contact\_Voice\_Telephone:* 404-675-6236

*Contact\_Facsimile\_Telephone:* 404-675-6244

*Hours\_of\_Service:* 8:00 am to 4:30 pm

*Process\_Step:*

*Process\_Description:*

Process Step 2: Creation of Georgia's 2002 305(b)/303(d) List Map

The process of creating the 2002 List map consisted largely of modifying the 2000 list polyline coverage and attribute table to concur with the new 2002 305(b)/303(d) list document. Significant addition of water body reaches was accomplished using the same methods and software outlined in the 2000 list process. Some reach segments, which did not appear on 1:100,000 hydrology coverage, were drawn in estimated locations. As a final step, a table in dbase format containing the entire 2002 305(b)/303(d) list was joined with the polyline shapefile in ArcView 3.x to form the final product.

*Process\_Date:* June 2002

*Process\_Contact:*

*Contact\_Information:*

*Contact\_Person\_Primary:*

*Contact\_Person:* 305(b) Coordinator

*Contact\_Organization:*

Georgia Environmental Protection Division - Watershed Protection Branch

*Contact\_Address:*

*Address\_Type:* mailing and physical address  
*Address:* 4220 International Parkway, Suite 101  
*City:* Atlanta  
*State\_or\_Province:* Georgia  
*Postal\_Code:* 30354  
*Country:* USA  
*Contact\_Voice\_Telephone:* 404-675-6236  
*Contact\_Facsimile\_Telephone:* 404-675-6244  
*Hours\_of\_Service:* 8:00 am to 4:30 pm  
*Process\_Step:*  
*Process\_Description:*  
Process Step 3: Creation of Georgia's 2004 305(b)/303(d) GIS Data Set

The process of creating the 2004 List map was very similar to the process used in 2002. The process consisted largely of modifying the 2002 list polyline coverage and attribute table to concur with the new 2004 305(b)/303(d) list document. Significant additions of water bodies reaches and updates of attributes were accomplished using the same methods outlined in the 2000 list process. Some reach segments, which did not appear on 1:100,000 hydrology coverage, were drawn in estimated locations. For 2004, some work was done in ArcGIS ArcView 8.3 using the geodatabase structure. As a final step, a table in Access format containing the entire 2004 305(b)/303(d) list was joined with the polyline feature class in ArcGIS ArcView 8.3 to form the final product.

*Process\_Date:* December 2004  
*Process\_Contact:*  
*Contact\_Information:*  
*Contact\_Person\_Primary:*  
*Contact\_Person:* 305(b) Coordinator  
*Contact\_Organization:*  
Georgia Environmental Protection Division - Watershed Protection Branch  
*Contact\_Position:* 305(b) Coordinator  
*Contact\_Address:*  
*Address\_Type:* mailing and physical address  
*Address:* 4220 International Pkwy, Suite 101  
*City:* Atlanta  
*State\_or\_Province:* Georgia  
*Postal\_Code:* 30354  
*Country:* USA  
*Contact\_Voice\_Telephone:* 404-675-6236  
*Contact\_Facsimile\_Telephone:* 404-675-6244  
*Process\_Step:*  
*Process\_Description:*



#### Process Step 4: Creation of Georgia's 2006 303(d) GIS Data Set for linear Hydrography Only (ie Stream Reaches)

The process of creating the 2006 303d List map was very similar to the process used in 2004. The process consisted largely of modifying the 2004 list polyline coverage and attribute table to concur with the new 2006 305(b)/303(d) list document. Significant additions of water body reaches and updates of attributes were accomplished using the same methods outlined in the 2000 list process. Some reach segments, which did not appear on 1:100,000 hydrology coverage, were drawn in estimated locations. For 2006, all work was done in ArcGIS ArcView 9.1 using the geodatabase structure. As a final step, a table in Access format containing the Year 2006 303(d) list (only partially and not supporting segments) was joined with the polyline feature class in ArcGIS ArcView 9.1 to form the final product.

*Process\_Date:* June 2006

*Process\_Contact:*

*Contact\_Information:*

*Contact\_Person\_Primary:*

*Contact\_Person:* 305(b) Coordinator

*Contact\_Organization:*

Georgia Environmental Protection Division - Watershed Protection Branch

*Contact\_Position:* 305(b) Coordinator

*Contact\_Address:*

*Address\_Type:* mailing and physical address

*Address:* 4220 International Pkwy, Suite 101

*City:* Atlanta

*State\_or\_Province:* Georgia

*Postal\_Code:* 30354

*Country:* USA

*Contact\_Voice\_Telephone:* 404-675-6236

*Contact\_Facsimile\_Telephone:* 404-675-6244

*Process\_Step:*

*Process\_Description:*

Process Step 5: Creation of Georgia's 2008 303(d) GIS Data Set For All Listed Water bodies

The process of creating the Year 2008 303d List map was very similar to the process used in 2006, however significant updates occurred and newer source GIS data was used. The process consisted largely of modifying the 2006 list polyline data set and attribute table to concur with the new 2008 305(b)/303(d) list document for coastal streams, coastal beaches, and streams. Also a separate polygon dataset was developed for lakes, sounds and harbors. Significant additions of water body reaches and updates of

attributes were accomplished using the same methods outlined in the 2000 list process, however, all new streams were added using the National Hydrography Dataset (NHD) Medium Resolution as source GIS data. Some reach segments, which did not appear on 1:100,000 NHD, were either drawn in estimated locations or added from 1:24,000 GIS data. For 2008, all final work was done in ArcGIS ArcView 9.1 using the personal geodatabase structure. As a final step, a table in Access format containing the Year 2008 305(b)/303(d) list was joined with the polyline feature class in ArcGIS ArcView 9.1 to form the final product.

*Process\_Date:* August 2008

*Process\_Contact:*

*Contact\_Information:*

*Contact\_Person\_Primary:*

*Contact\_Person:* 305(b) Coordinator

*Contact\_Organization:*

Georgia Environmental Protection Division - Watershed Protection Branch

*Contact\_Position:* 305(b) Coordinator

*Contact\_Address:*

*Address\_Type:* mailing and physical address

*Address:* 4220 International Pkwy, Suite 101

*City:* Atlanta

*State\_or\_Province:* Georgia

*Postal\_Code:* 30354

*Country:* USA

*Contact\_Voice\_Telephone:* 404-675-6236

*Contact\_Facsimile\_Telephone:* 404-675-6244

*Process\_Step:*

*Process\_Description:*

Process Step 6: Creation of Georgia's 2008 303(d) GIS Data Set For Biota Impacted Steams Only

The process included performing a selection by attributes to select out all streams and beaches listed for Biota Impacted - Fish Community (Bio F) or Biota Impacted - Macroinvertebrate Community (Bio M). The selected streams were exported into new feature class.

*Cloud\_Cover:* N/A

---

*Spatial\_Data\_Organization\_Information:*

*Direct\_Spatial\_Reference\_Method:* Vector

*Point\_and\_Vector\_Object\_Information:*

*SDTS\_Terms\_Description:*

*SDTS\_Point\_and\_Vector\_Object\_Type:* String

*Point\_and\_Vector\_Object\_Count:* 365

---

*Spatial\_Reference\_Information:*

*Horizontal\_Coordinate\_System\_Definition:*

*Geographic:*

*Latitude\_Resolution:* 0.000000

*Longitude\_Resolution:* 0.000000

*Geographic\_Coordinate\_Units:* Decimal degrees

*Geodetic\_Model:*

*Horizontal\_Datum\_Name:* North American Datum of 1983

*Ellipsoid\_Name:* Geodetic Reference System 80

*Semi-major\_Axis:* 6378137.000000

*Denominator\_of\_Flattening\_Ratio:* 298.257222

*Vertical\_Coordinate\_System\_Definition:*

*Altitude\_System\_Definition:*

*Altitude\_Resolution:* 0.000010

*Altitude\_Encoding\_Method:*

Explicit elevation coordinate included with horizontal coordinates

---

*Entity\_and\_Attribute\_Information:*

*Detailed\_Description:*

*Entity\_Type:*

*Entity\_Type\_Label:*

Y2008\_305b303d\_Streams\_CoastalStreams\_Beaches\_Biota

*Entity\_Type\_Definition:*

Attribute table of GIS data set for Georgia's 2008 Integrated 305(b)/303(d)

Report (also referred to as Water Quality in Georgia 2006-2007) FINAL.

The attributes contain the same information found in the 305(b)/303(d)

List Report.

*Attribute:*

*Attribute\_Label:* Shape

*Attribute\_Definition:* Feature geometry.

*Attribute\_Definition\_Source:* ESRI

*Attribute\_Domain\_Values:*

*Unrepresentable\_Domain:* Coordinates defining the features.

*Attribute:*

*Attribute\_Label:* Reach\_ID

*Attribute\_Definition:*

Unique alphanumeric identifier for a 305(b)/303(d) listed reach. Derived from HUC ID number for USGS delineated 10 digit HUC watersheds. R indicates EPD reach, next 10 digits is the HUC 10 code and last 2 digits are internal EPD assigned digits.

*Attribute\_Definition\_Source:*

Georgia Environmental Protection Division - Watershed Protection Branch

*Attribute:*

*Attribute\_Label:* Reach\_Name

*Attribute Definition:*

Name of 305(b)/303(d) listed water bodies. Water body names are consistent with either naming on NHD Medium Resolution, USGS topographical maps, Georgia DOT County Maps or River Reach 3 coverage.

*Attribute Definition Source:*

Georgia Environmental Protection Division - Watershed Protection Branch

*Attribute:*

*Attribute Label:* Reach\_Location

*Attribute Definition:*

Location information, usually a beginning and ending location, for 305(b)/303(d) listed stream reach.

*Attribute Definition Source:*

Georgia Environmental Protection Division - Watershed Protection Branch

*Attribute:*

*Attribute Label:* River\_Basin

*Attribute Definition:*

Major river basin containing the 305(b)/303(d) listed water body.

*Attribute Definition Source:*

Georgia Environmental Protection Division - Watershed Protection Branch

*Attribute Domain Values:*

*Enumerated Domain:*

*Enumerated Domain Value:* Altamaha

*Enumerated Domain:*

*Enumerated Domain Value:* Chattahoochee

*Enumerated Domain:*

*Enumerated Domain Value:* Coosa

*Enumerated Domain:*

*Enumerated Domain Value:* Flint

*Enumerated Domain:*

*Enumerated Domain Value:* Ochlockonee

*Enumerated Domain:*

*Enumerated Domain Value:* Ocmulgee

*Enumerated Domain:*

*Enumerated Domain Value:* Oconee

*Enumerated Domain:*

*Enumerated Domain Value:* Ogeechee

*Enumerated Domain:*

*Enumerated Domain Value:* St. Marys

*Enumerated Domain:*

*Enumerated Domain Value:* Satilla

*Enumerated Domain:*

*Enumerated Domain Value:* Savannah

*Enumerated\_Domain:*

*Enumerated\_Domain\_Value:* Suwannee

*Enumerated\_Domain:*

*Enumerated\_Domain\_Value:* Tallapoosa

*Enumerated\_Domain:*

*Enumerated\_Domain\_Value:* Tennessee

*Attribute:*

*Attribute\_Label:* Criterion\_Viol

*Attribute\_Definition:*

Water quality criterion violated by 305(b)/303(d) listed water body. A water body can have multiple violations separated by a comma. Segments with the evaluation "Assessment Pending" or "Supporting" do not have violations; therefore, these fields are left blank.

*Attribute\_Definition\_Source:*

Georgia Environmental Protection Division - Watershed Protection Branch

*Attribute\_Domain\_Values:*

*Enumerated\_Domain:*

*Enumerated\_Domain\_Value:* As

*Enumerated\_Domain\_Value\_Definition:* Arsenic

*Enumerated\_Domain:*

*Enumerated\_Domain\_Value:* Bio F

*Enumerated\_Domain\_Value\_Definition:* Biota Impacted (Fish Community)

*Enumerated\_Domain:*

*Enumerated\_Domain\_Value:* Bio M

*Enumerated\_Domain\_Value\_Definition:* Biota Impacted (Macroinvertebrate Community)

*Enumerated\_Domain:*

*Enumerated\_Domain\_Value:* Cd

*Enumerated\_Domain\_Value\_Definition:* Cadmium

*Enumerated\_Domain:*

*Enumerated\_Domain\_Value:* CN

*Enumerated\_Domain\_Value\_Definition:* Cyanide

*Enumerated\_Domain:*

*Enumerated\_Domain\_Value:* Cr

*Enumerated\_Domain\_Value\_Definition:* Chromium

*Enumerated\_Domain:*

*Enumerated\_Domain\_Value:* Cu

*Enumerated\_Domain\_Value\_Definition:* Copper

*Enumerated\_Domain:*

*Enumerated\_Domain\_Value:* 1,1-DCE

*Enumerated\_Domain\_Value\_Definition:* 1,1- Dichloroethylene

*Enumerated\_Domain:*

*Enumerated\_Domain\_Value:* DO

*Enumerated\_Domain\_Value\_Definition:* Dissolved Oxygen

*Enumerated\_Domain:*  
*Enumerated\_Domain\_Value:* CFB  
*Enumerated\_Domain\_Value\_Definition:* Commercial Fishing Ban  
*Enumerated\_Domain:*  
*Enumerated\_Domain\_Value:* Chlorophyll a  
*Enumerated\_Domain\_Value\_Definition:* Chlorophyll a  
*Enumerated\_Domain:*  
*Enumerated\_Domain\_Value:* FC  
*Enumerated\_Domain\_Value\_Definition:* Fecal Coliform Bacteria  
*Enumerated\_Domain:*  
*Enumerated\_Domain\_Value:* FCG  
*Enumerated\_Domain\_Value\_Definition:* Fish Consumption Guidance  
*Enumerated\_Domain:*  
*Enumerated\_Domain\_Value:* FCG(DDE/DDD)  
*Enumerated\_Domain\_Value\_Definition:* Fish Consumption Guidance for DDE/DDD  
*Enumerated\_Domain:*  
*Enumerated\_Domain\_Value:* Hg  
*Enumerated\_Domain\_Value\_Definition:* Mercury  
*Enumerated\_Domain:*  
*Enumerated\_Domain\_Value:* Ni  
*Enumerated\_Domain\_Value\_Definition:* Nickel  
*Enumerated\_Domain:*  
*Enumerated\_Domain\_Value:* Pb  
*Enumerated\_Domain\_Value\_Definition:* Lead  
*Enumerated\_Domain:*  
*Enumerated\_Domain\_Value:* PCE  
*Enumerated\_Domain\_Value\_Definition:* Tetrachloroethylene  
*Enumerated\_Domain:*  
*Enumerated\_Domain\_Value:* SB  
*Enumerated\_Domain\_Value\_Definition:* Shellfishing Ban  
*Enumerated\_Domain:*  
*Enumerated\_Domain\_Value:* Se  
*Enumerated\_Domain\_Value\_Definition:* Selenium  
*Enumerated\_Domain:*  
*Enumerated\_Domain\_Value:* Temp  
*Enumerated\_Domain\_Value\_Definition:* Temperature  
*Enumerated\_Domain:*  
*Enumerated\_Domain\_Value:* TCA  
*Enumerated\_Domain\_Value\_Definition:* 1,1,2 - Trichloroethane  
*Enumerated\_Domain:*  
*Enumerated\_Domain\_Value:* Tox  
*Enumerated\_Domain\_Value\_Definition:* Toxicity Indicated  
*Enumerated\_Domain:*  
*Enumerated\_Domain\_Value:* TWR  
*Enumerated\_Domain\_Value\_Definition:*

Trophic-Weighted Residue Value of Mercury in fish tissue exceeding the EPD human health standard of 0.3 mg/kg

*Enumerated\_Domain:*

*Enumerated\_Domain\_Value:* Zn

*Enumerated\_Domain\_Value\_Definition:* Zinc

*Attribute:*

*Attribute\_Label:* Potential\_Causes

*Attribute\_Definition:*

Evaluated causes attributed to water quality criterion violation 303(d) listed water body. A water body can have multiple sources separated by a comma.

*Attribute\_Definition\_Source:*

Georgia Environmental Protection Division - Watershed Protection Branch

*Attribute\_Domain\_Values:*

*Enumerated\_Domain:*

*Enumerated\_Domain\_Value:* CSO

*Enumerated\_Domain\_Value\_Definition:* Combined Sewer Overflow

*Enumerated\_Domain:*

*Enumerated\_Domain\_Value:* I1

*Enumerated\_Domain\_Value\_Definition:* Industrial Facility

*Enumerated\_Domain:*

*Enumerated\_Domain\_Value:* I2

*Enumerated\_Domain\_Value\_Definition:* Residual from Industrial Source

*Enumerated\_Domain:*

*Enumerated\_Domain\_Value:* MA

*Enumerated\_Domain\_Value\_Definition:* Marina

*Enumerated\_Domain:*

*Enumerated\_Domain\_Value:* M

*Enumerated\_Domain\_Value\_Definition:* Municipal Facility

*Enumerated\_Domain:*

*Enumerated\_Domain\_Value:* NP

*Enumerated\_Domain\_Value\_Definition:* Nonpoint Sources/Unknown Sources

*Enumerated\_Domain:*

*Enumerated\_Domain\_Value:* UR

*Enumerated\_Domain\_Value\_Definition:* Urban Runoff/Urban Effects

*Enumerated\_Domain:*

*Enumerated\_Domain\_Value:* SB

*Enumerated\_Domain\_Value\_Definition:* Shellfish Ban

*Attribute:*

*Attribute\_Label:* Data\_Source

*Attribute\_Definition:*

Source(s) of data used in the water quality assessment. A water body can have multiple data sources separated by a comma. In cases where the data source was unknown, the field was left blank.



*Attribute\_Definition\_Source:*

Georgia Environmental Protection Division - Watershed Protection Branch

*Attribute\_Domain\_Values:*

*Enumerated\_Domain:*

*Enumerated\_Domain\_Value:* 1

*Enumerated\_Domain\_Value\_Definition:* DNR-EPD-WPB, Watershed Planning & Monitoring Program

*Enumerated\_Domain:*

*Enumerated\_Domain\_Value:* 2

*Enumerated\_Domain\_Value\_Definition:* DNR-EPD-WPB, Permitting Comp. & Enf. Program (Municipal)

*Enumerated\_Domain:*

*Enumerated\_Domain\_Value:* 3

*Enumerated\_Domain\_Value\_Definition:* DNR-EPD-WPB, Permitting Comp. & Enf. Program (Industrial)

*Enumerated\_Domain:*

*Enumerated\_Domain\_Value:* 4

*Enumerated\_Domain\_Value\_Definition:* DNR, Wildlife Resources Division

*Enumerated\_Domain:*

*Enumerated\_Domain\_Value:* 5

*Enumerated\_Domain\_Value\_Definition:* DNR, Coastal Resources Division

*Enumerated\_Domain:*

*Enumerated\_Domain\_Value:* 6

*Enumerated\_Domain\_Value\_Definition:* State University of West Georgia

*Enumerated\_Domain:*

*Enumerated\_Domain\_Value:* 7

*Enumerated\_Domain\_Value\_Definition:* Gainesville College

*Enumerated\_Domain:*

*Enumerated\_Domain\_Value:* 8

*Enumerated\_Domain\_Value\_Definition:* Georgia Institute of Technology

*Enumerated\_Domain:*

*Enumerated\_Domain\_Value:* 9

*Enumerated\_Domain\_Value\_Definition:* U.S. Environmental Protection Agency

*Enumerated\_Domain:*

*Enumerated\_Domain\_Value:* 10

*Enumerated\_Domain\_Value\_Definition:* U.S. Geological Survey

*Enumerated\_Domain:*

*Enumerated\_Domain\_Value:* 11

*Enumerated\_Domain\_Value\_Definition:* U.S. Army Corps of Engineers

*Enumerated\_Domain:*

*Enumerated\_Domain\_Value:* 12

*Enumerated\_Domain\_Value\_Definition:* U.S. Forest Service

*Enumerated\_Domain:*  
*Enumerated\_Domain\_Value:* 13  
*Enumerated\_Domain\_Value\_Definition:* Tennessee Valley Authority  
*Enumerated\_Domain:*  
*Enumerated\_Domain\_Value:* 14  
*Enumerated\_Domain\_Value\_Definition:* Cobb County  
*Enumerated\_Domain:*  
*Enumerated\_Domain\_Value:* 15  
*Enumerated\_Domain\_Value\_Definition:* Dekalb County  
*Enumerated\_Domain:*  
*Enumerated\_Domain\_Value:* 16  
*Enumerated\_Domain\_Value\_Definition:* Douglas County Water & Sewer Authority  
*Enumerated\_Domain:*  
*Enumerated\_Domain\_Value:* 17  
*Enumerated\_Domain\_Value\_Definition:* Fulton County  
*Enumerated\_Domain:*  
*Enumerated\_Domain\_Value:* 18  
*Enumerated\_Domain\_Value\_Definition:* Gwinnett County  
*Enumerated\_Domain:*  
*Enumerated\_Domain\_Value:* 19  
*Enumerated\_Domain\_Value\_Definition:* City of Clayton  
*Enumerated\_Domain:*  
*Enumerated\_Domain\_Value:* 20  
*Enumerated\_Domain\_Value\_Definition:* City of Gainesville  
*Enumerated\_Domain:*  
*Enumerated\_Domain\_Value:* 21  
*Enumerated\_Domain\_Value\_Definition:* City of LaGrange  
*Enumerated\_Domain:*  
*Enumerated\_Domain\_Value:* 22  
*Enumerated\_Domain\_Value\_Definition:* Georgia Mountains RDC  
*Enumerated\_Domain:*  
*Enumerated\_Domain\_Value:* 23  
*Enumerated\_Domain\_Value\_Definition:* City of Conyers  
*Enumerated\_Domain:*  
*Enumerated\_Domain\_Value:* 24  
*Enumerated\_Domain\_Value\_Definition:* Lake Allatoona (Kennesaw State University)  
*Enumerated\_Domain:*  
*Enumerated\_Domain\_Value:* 25  
*Enumerated\_Domain\_Value\_Definition:* Lake Blackshear (Lake Blackshear Watershed Association)  
*Enumerated\_Domain:*  
*Enumerated\_Domain\_Value:* 26  
*Enumerated\_Domain\_Value\_Definition:* Lake Lanier (University of Georgia)

*Enumerated\_Domain:*  
*Enumerated\_Domain\_Value:* 27  
*Enumerated\_Domain\_Value\_Definition:* West Point (LaGrange College/Auburn University)  
*Enumerated\_Domain:*  
*Enumerated\_Domain\_Value:* 28  
*Enumerated\_Domain\_Value\_Definition:* Georgia Power Company  
*Enumerated\_Domain:*  
*Enumerated\_Domain\_Value:* 29  
*Enumerated\_Domain\_Value\_Definition:* Oglethorpe Power Company  
*Enumerated\_Domain:*  
*Enumerated\_Domain\_Value:* 30  
*Enumerated\_Domain\_Value\_Definition:* South Carolina Electric & Gas Company  
*Enumerated\_Domain:*  
*Enumerated\_Domain\_Value:* 31  
*Enumerated\_Domain\_Value\_Definition:* South Carolina DHEC  
*Enumerated\_Domain:*  
*Enumerated\_Domain\_Value:* 32  
*Enumerated\_Domain\_Value\_Definition:* Jones Ecological Research Center  
*Enumerated\_Domain:*  
*Enumerated\_Domain\_Value:* 33  
*Enumerated\_Domain\_Value\_Definition:* Alabama DEM  
*Enumerated\_Domain:*  
*Enumerated\_Domain\_Value:* 34  
*Enumerated\_Domain\_Value\_Definition:* City of College Park  
*Enumerated\_Domain:*  
*Enumerated\_Domain\_Value:* 35  
*Enumerated\_Domain\_Value\_Definition:* Kennesaw State University  
*Enumerated\_Domain:*  
*Enumerated\_Domain\_Value:* 36  
*Enumerated\_Domain\_Value\_Definition:* University of Georgia  
*Enumerated\_Domain:*  
*Enumerated\_Domain\_Value:* 37  
*Enumerated\_Domain\_Value\_Definition:* Columbus Water Works  
*Enumerated\_Domain:*  
*Enumerated\_Domain\_Value:* 38  
*Enumerated\_Domain\_Value\_Definition:* Columbus Unified Government  
*Enumerated\_Domain:*  
*Enumerated\_Domain\_Value:* 39  
*Enumerated\_Domain\_Value\_Definition:* St. Johns River Water Mgmt. District  
*Enumerated\_Domain:*  
*Enumerated\_Domain\_Value:* 40  
*Enumerated\_Domain\_Value\_Definition:* Town of Trion, Georgia

*Enumerated\_Domain:*  
*Enumerated\_Domain\_Value:* 41  
*Enumerated\_Domain\_Value\_Definition:* Cherokee County  
*Enumerated\_Domain:*  
*Enumerated\_Domain\_Value:* 42  
*Enumerated\_Domain\_Value\_Definition:* Clayton County Water Authority  
*Enumerated\_Domain:*  
*Enumerated\_Domain\_Value:* 43  
*Enumerated\_Domain\_Value\_Definition:* City of Atlanta  
*Enumerated\_Domain:*  
*Enumerated\_Domain\_Value:* 44  
*Enumerated\_Domain\_Value\_Definition:* City of Cartersville  
*Enumerated\_Domain:*  
*Enumerated\_Domain\_Value:* 45  
*Enumerated\_Domain\_Value\_Definition:* Georgia Ports Authority  
*Enumerated\_Domain:*  
*Enumerated\_Domain\_Value:* 46  
*Enumerated\_Domain\_Value\_Definition:* Chattahoochee/Flint RDC  
*Enumerated\_Domain:*  
*Enumerated\_Domain\_Value:* 47  
*Enumerated\_Domain\_Value\_Definition:* Upper Etowah Adopt-A-Stream  
*Enumerated\_Domain:*  
*Enumerated\_Domain\_Value:* 48  
*Enumerated\_Domain\_Value\_Definition:* Middle Flint RDC  
*Enumerated\_Domain:*  
*Enumerated\_Domain\_Value:* 49  
*Enumerated\_Domain\_Value\_Definition:* Central Savannah RDC  
*Enumerated\_Domain:*  
*Enumerated\_Domain\_Value:* 50  
*Enumerated\_Domain\_Value\_Definition:* Chatham County  
*Enumerated\_Domain:*  
*Enumerated\_Domain\_Value:* 51  
*Enumerated\_Domain\_Value\_Definition:* City of Savannah  
*Enumerated\_Domain:*  
*Enumerated\_Domain\_Value:* 52  
*Enumerated\_Domain\_Value\_Definition:* Heart of Georgia RDC  
*Enumerated\_Domain:*  
*Enumerated\_Domain\_Value:* 53  
*Enumerated\_Domain\_Value\_Definition:* City of Augusta RDC  
*Enumerated\_Domain:*  
*Enumerated\_Domain\_Value:* 54  
*Enumerated\_Domain\_Value\_Definition:* Southwire Company  
*Enumerated\_Domain:*  
*Enumerated\_Domain\_Value:* 55  
*Enumerated\_Domain\_Value\_Definition:* DNR-EPD-Program Support  
Division, Brunswick Coastal District

*Enumerated\_Domain:*

*Enumerated\_Domain\_Value:* 56

*Enumerated\_Domain\_Value\_Definition:* DNR-EPD, Hazardous Waste  
Mgmt. Branch

*Enumerated\_Domain:*

*Enumerated\_Domain\_Value:* 57

*Enumerated\_Domain\_Value\_Definition:* Ellijay High School

*Enumerated\_Domain:*

*Enumerated\_Domain\_Value:* 58

*Enumerated\_Domain\_Value\_Definition:* DNR, Georgia Parks Recreation  
& Historic Sites Division

*Enumerated\_Domain:*

*Enumerated\_Domain\_Value:* 59

*Enumerated\_Domain\_Value\_Definition:* DNR-EPD, Ambient Monitoring  
Unit (Macroinvertebrate Team)

*Attribute:*

*Attribute\_Label:* County

*Attribute\_Definition:*

Georgia county or counties that the water body is found within or  
overlaps.

*Attribute\_Definition\_Source:*

Georgia Environmental Protection Division - Watershed Protection  
Branch

*Attribute\_Domain\_Values:*

*Codeset\_Domain:*

*Codeset\_Name:* Georgia Counties

*Attribute:*

*Attribute\_Label:* Waterbody\_Type

*Attribute\_Definition:* Waterbody type of 305(b)/303(d) listed reach.

*Attribute\_Definition\_Source:*

Georgia Environmental Protection Division - Watershed Protection  
Branch

*Attribute\_Domain\_Values:*

*Enumerated\_Domain:*

*Enumerated\_Domain\_Value:* Coastal Beach

*Enumerated\_Domain:*

*Enumerated\_Domain\_Value:* Coastal Stream

*Enumerated\_Domain:*

*Enumerated\_Domain\_Value:* Stream

*Enumerated\_Domain:*

*Enumerated\_Domain\_Value:* Lake

*Enumerated\_Domain:*

*Enumerated\_Domain\_Value:* Sound/Harbor

*Attribute:*

*Attribute\_Label:* Water\_Use

*Attribute\_Definition:*

Water use classification for the 305(b)/303(d) listed water body. A water body can have multiple water use classifications separated by a slash.

*Attribute\_Definition\_Source:*

Georgia Environmental Protection Division - Watershed Protection Branch

*Attribute\_Domain\_Values:*

*Enumerated\_Domain:*

*Enumerated\_Domain\_Value:* Coastal Fishing

*Enumerated\_Domain:*

*Enumerated\_Domain\_Value:* Drinking Water

*Enumerated\_Domain:*

*Enumerated\_Domain\_Value:* Fishing

*Enumerated\_Domain:*

*Enumerated\_Domain\_Value:* Recreation

*Enumerated\_Domain:*

*Enumerated\_Domain\_Value:* Wild and Scenic

*Attribute:*

*Attribute\_Label:* Evaluation\_Use

*Attribute\_Definition:*

Water quality assessment result evaluation. USEPA requirements abandoned these evaluations and replaced with Category Tier levels. GAEPD will continue to use evaluation designations in the 305(b)/303(d) list to ensure transition to new Category Tiers.

*Attribute\_Definition\_Source:*

Georgia Environmental Protection Division - Watershed Protection Branch

*Attribute\_Domain\_Values:*

*Enumerated\_Domain:*

*Enumerated\_Domain\_Value:* Not Supporting

*Enumerated\_Domain:*

*Enumerated\_Domain\_Value:* Supporting

*Enumerated\_Domain:*

*Enumerated\_Domain\_Value:* Assessment Pending

*Attribute:*

*Attribute\_Label:* Category\_Tier

*Attribute\_Definition:* Category Tier Level

*Attribute\_Definition\_Source:*

Georgia Environmental Protection Division - Watershed Protection Branch

*Attribute\_Domain\_Values:*

*Enumerated\_Domain:*

*Enumerated\_Domain\_Value:* 1

*Enumerated\_Domain\_Value\_Definition:*

Category 1 - Data indicates that waters are meeting their designated use(s). The placement of a water body in Category 1 is comparable to a water body having been on the "supporting" list in previous 305(b)/303(d) lists.

*Enumerated\_Domain:*

*Enumerated\_Domain\_Value:* 3

*Enumerated\_Domain\_Value\_Definition:*

Category 3 - There is insufficient data or other information to make a determination as to whether or not the designated use(s) is being met. In the past, if GA EPD had insufficient data to make an assessment of use attainment, the water body in question was not included in the 305(b)/303(d) list. The inclusion of Category 3 will allow GA EPD to include these waters on the list which will help the State to keep track of them until such time that there is enough data to make an assessment. GA EPD's goal is to minimize the use of this Category as much as possible.

*Enumerated\_Domain:*

*Enumerated\_Domain\_Value:* 4a

*Enumerated\_Domain\_Value\_Definition:*

Category 4a - Data indicates that at least one designated use is not being met, but TMDL(s) have been completed for the parameter(s) that are causing a water not to meet its use(s). In previous 305(b)/303(d) lists, a water body that was determined not to be supporting its use, but a TMDL had been completed for the parameter of concern would have been indicated by the presence of the number "3" in the 303(d) column of the report.

*Enumerated\_Domain:*

*Enumerated\_Domain\_Value:* 4b

*Enumerated\_Domain\_Value\_Definition:*

Category 4b - Data indicates that at least one designated use is not being met, but there are actions in place (other than a TMDL) that are predicted to lead to compliance with water quality standards. In previous 305(b)/303(d) lists, waters meeting this condition would have been indicated by the presence of the number "2" in the 303(d) column of the report. An example of a situation that may warrant placing a water body in Category 4b is the following: A stream is found to be "not supporting" its use due to excessive amounts of lead in the water column. It is known that the source of lead is a particular industry and that industry has been given a lead limit in their NPDES permit and is under a compliance schedule to meet that limit within a specific period of time.

*Enumerated\_Domain:*

*Enumerated\_Domain\_Value:* 5

*Enumerated\_Domain\_Value\_Definition:*

Category 5 - Data indicates that at least one designated use is not being met and TMDL(s) need to be completed for one or more pollutants. In previous 305(b)/303(d) lists, a water body that was determined not to be supporting its use and for which a TMDL still needed to be completed was indicated by the presence of an "x" in the 303(d) column of the report.

*Attribute:*

*Attribute\_Label:* Stream\_Extent

*Attribute\_Definition:*



Extent of water body corresponding to 305(b)/303(d) listed stream reach. Value represents linear miles in whole numbers for coastal stream and stream reaches.

*Attribute\_Definition\_Source:*

Georgia Environmental Protection Division - Watershed Protection Branch

*Attribute:*

*Attribute\_Label:* Beach\_Extent

*Attribute\_Definition:*

Extent of waterbody corresponding to 305(b)/303(d) listed coastal beach reach. Value represents linear miles in decimal for coastal beaches.

*Attribute\_Definition\_Source:*

Georgia Environmental Protection Division - Watershed Protection Branch

*Attribute:*

*Attribute\_Label:* Extent\_Units

*Attribute\_Definition:*

Extent units of water body corresponding to 305(b)/303(d) listed reach. Value represents linear miles for coastal streams, coastal beaches and streams.

*Attribute\_Definition\_Source:*

Georgia Environmental Protection Division - Watershed Protection Branch

*Attribute:*

*Attribute\_Label:* Priority\_Year

*Attribute\_Definition:*

The year a TMDL was developed for 303(d) segment or proposed year for future TMDL development.

*Attribute\_Definition\_Source:*

Georgia Environmental Protection Division - Watershed Protection Branch

*Attribute:*

*Attribute\_Label:* Notes

*Attribute\_Definition:* Additional comments and notes within the 305(b)/303(d) list.

*Attribute\_Definition\_Source:*

Georgia Environmental Protection Division - Watershed Protection Branch

*Attribute:*

*Attribute\_Label:* Reach\_HUC8

*Attribute\_Definition:*

The U.S. Geological Survey Hydrologic Units 8 digit code that contains the 305(b)/303(d) listed reach.

*Attribute\_Definition\_Source:*

Georgia Environmental Protection Division - Watershed Protection Branch

*Attribute:*

*Attribute\_Label:* Reach\_HUC10

*Attribute\_Definition:*

The U.S. Geological Survey Hydrologic Units 10 digit code that contains the 305(b)/303(d) listed reach. If the reach overlaps more than one HUC 10 then the lower draining HUC10 is used

*Attribute\_Definition\_Source:*

Georgia Environmental Protection Division - Watershed Protection Branch

*Attribute:*

*Attribute\_Label:* OBJECTID

*Attribute\_Definition:* Internal feature number.

*Attribute\_Definition\_Source:* ESRI

*Attribute\_Domain\_Values:*

*Unrepresentable\_Domain:*

Sequential unique whole numbers that are automatically generated.

*Attribute:*

*Attribute\_Label:* Shape\_Length

*Attribute\_Definition:* Length of feature in internal units.

*Attribute\_Definition\_Source:* ESRI

*Attribute\_Domain\_Values:*

*Unrepresentable\_Domain:* Positive real numbers that are automatically generated.

---

*Distribution\_Information:*

*Distributor:*

*Contact\_Information:*

*Contact\_Person\_Primary:*

*Contact\_Person:* 305(b) Coordinator

*Contact\_Organization:*

Georgia Environmental Protection Division, Watershed Protection Branch

*Contact\_Position:* 305(b) Coordinator

*Contact\_Address:*

*Address\_Type:* mailing and physical address

*Address:* 4220 International Pkwy, Suite 101

*City:* Atlanta

*State\_or\_Province:* Georgia

*Postal\_Code:* 30354

*Country:* USA

*Contact\_Voice\_Telephone:* 404-675-6236

*Contact\_Facsimile\_Telephone:* 404-362-6244

*Resource\_Description:* Downloadable Data

*Distribution\_Liability:*

This data set is not designed for use as a primary, regulatory tool in permitting or siting decisions, but may be used as a reference source. This is public information and may be interpreted by organizations, agencies,

units of government, or others based on needs; however, they are responsible for the appropriate application. Federal, State, local regulatory bodies, private individuals or organizations are not to reassign to the Georgia Department of Natural Resources, Environmental Protection Division - Watershed Protection Branch any authority for the decisions that they make.

*Standard\_Order\_Process:*

*Digital\_Form:*

*Digital\_Transfer\_Information:*

*Transfer\_Size:* 0.346

*Fees:* none

*Ordering\_Instructions:* none

*Turnaround:* none

---

*Metadata\_Reference\_Information:*

*Metadata\_Date:* 20080902

*Metadata\_Review\_Date:* August 2008

*Metadata\_Contact:*

*Contact\_Information:*

*Contact\_Organization\_Primary:*

*Contact\_Organization:*

Georgia Environmental Protection Division - Watershed Protection Branch

*Contact\_Person:* Barbara Stitt - Allen

*Contact\_Position:* GIS Branch Coordinator

*Contact\_Address:*

*Address\_Type:* mailing and physical address

*Address:* 4220 International Pkwy, Suite 101

*City:* Atlanta

*State\_or\_Province:* Georgia

*Postal\_Code:* 30354

*Country:* USA

*Contact\_Voice\_Telephone:* 404-362-6338

*Contact\_Facsimile\_Telephone:* 404-675-6247

*Metadata\_Standard\_Name:* FGDC Content Standards for Digital Geospatial Metadata

*Metadata\_Standard\_Version:* FGDC-STD-001-1998

*Metadata\_Time\_Convention:* local time

*Metadata\_Security\_Information:*

*Metadata\_Security\_Classification:* Restricted

*Metadata\_Extensions:*

*Online\_Linkage:* <<http://www.esri.com/metadata/esriprof80.html>>

*Profile\_Name:* ESRI Metadata Profile

