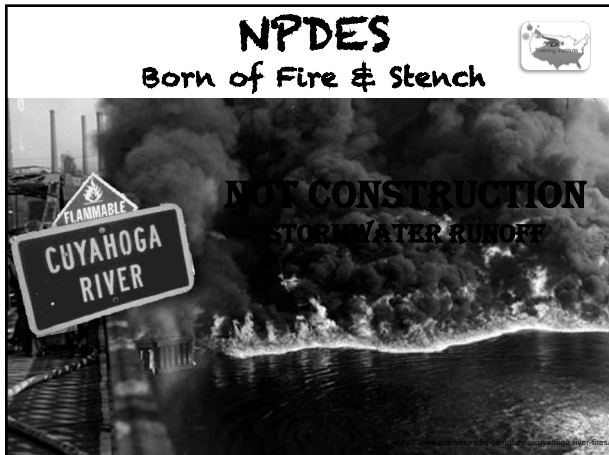


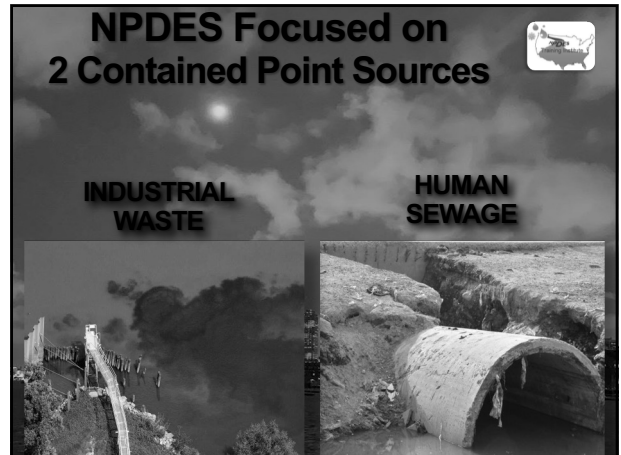
1



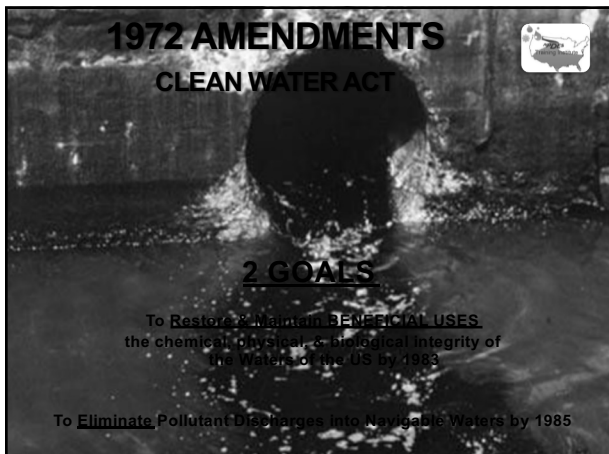
2



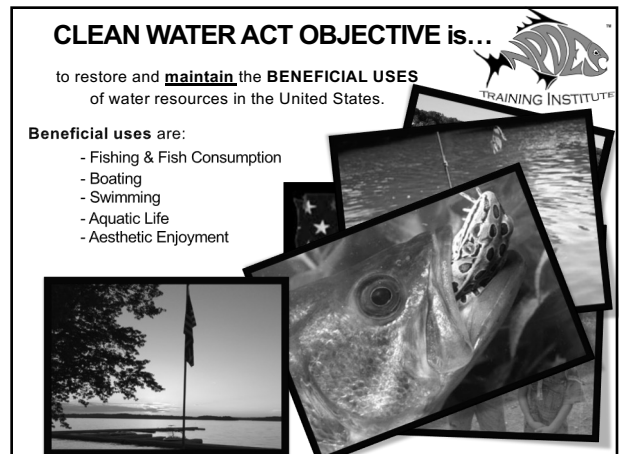
3



4



5



6

Point Source Management GOAL is to Achieve Water Quality Standards

Water quality standards serve as the foundation for the water-quality based approach to pollution control. Water quality standards are state or tribal requirements that define the water quality goals of a lake, stream, or other waterbody by designating the beneficial uses and setting criteria to protect those uses. Beneficial uses may include fishing, swimming, boating, aquatic habitat, agriculture navigation, or others.

Water quality criteria establish standards necessary to protect and ensure that beneficial uses are attained. Criteria may be numeric or narrative standards that are designed to restore and maintain the chemical, physical, and biological integrity of a waterbody.

Water quality criteria establishes standards necessary to protect and ensure that **BENEFICIAL USES** identified in the Clean Water Act are attained.

Kokanee Salmon

7

1977 The Pre-Treatment Program

Authorized by Congress

OBJECTIVE

To prevent the introduction of pollutants into a POTW that will interfere with its operation, including discharges that inhibit or disrupt the processes or operations.

[paraphrased from 40 CFR 403.3(k)]

REQUIRES ACTIVE TREATMENT

8

INDUSTRIAL POLLUTION Pre-Treatment Train

PASSIVE Treatment

ACTIVE Treatment

PRE-TREATMENT SYSTEM → POTW → STATE WATER

9

HOW DID SEDIMENT FROM CONSTRUCTION BECOME A POINT SOURCE

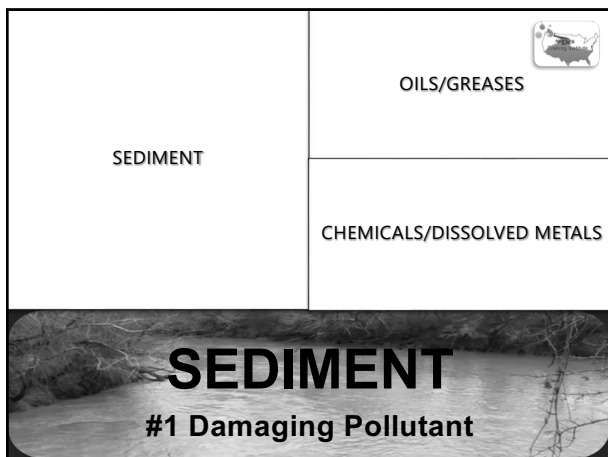
10

11

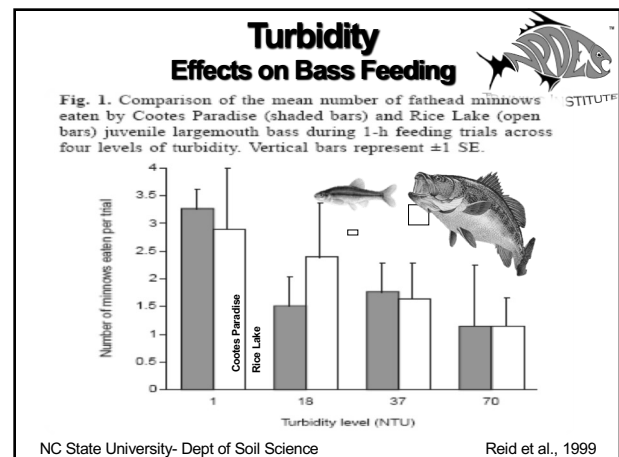
STORM_OUTFALL

12

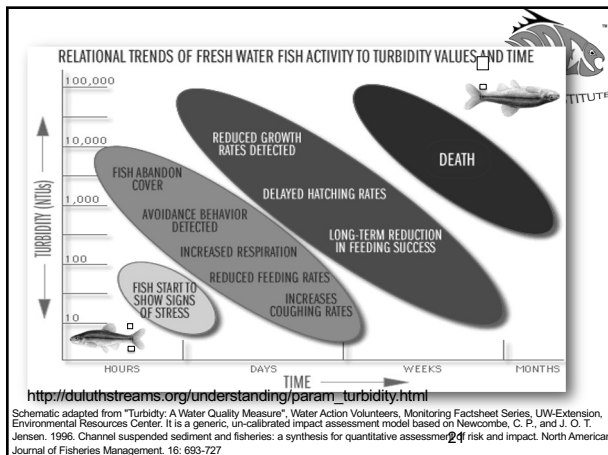




19



20



21



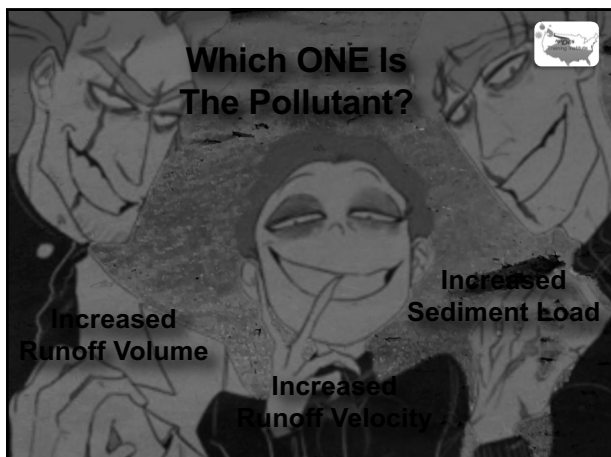
22



23



24



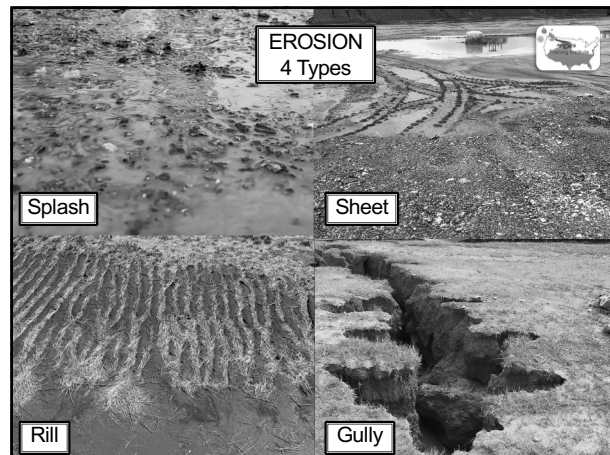
25



26



27



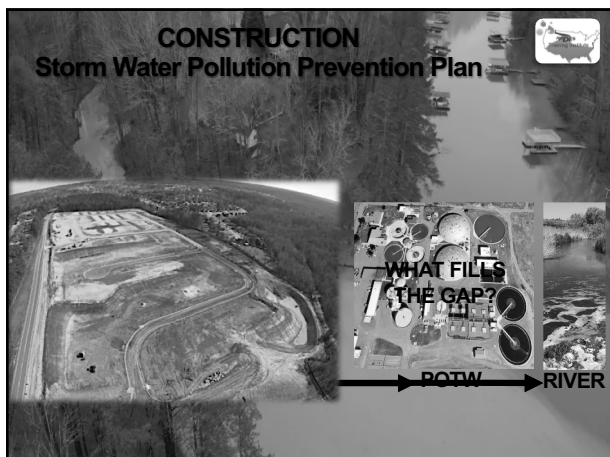
28



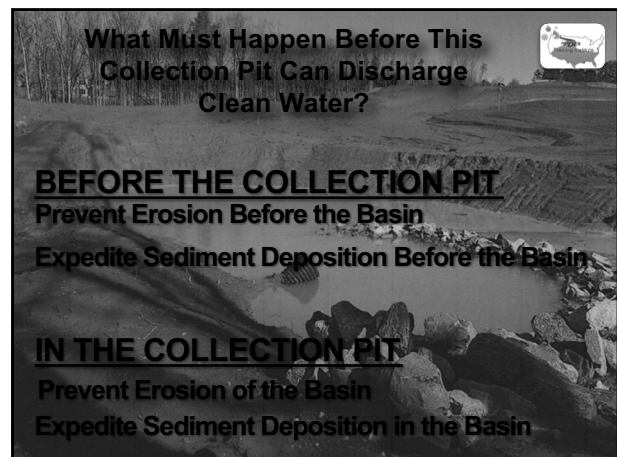
29



30



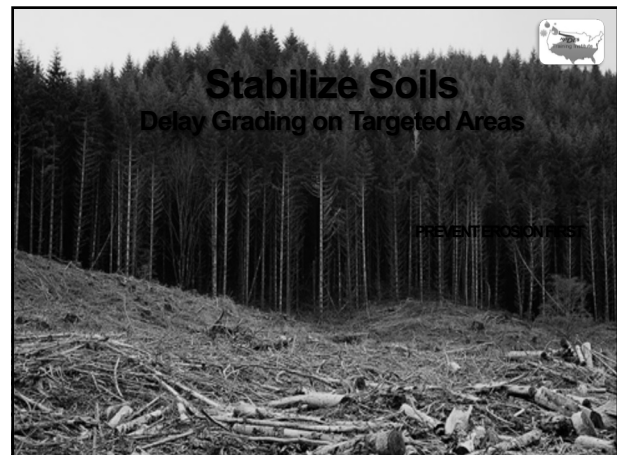
31



32



33



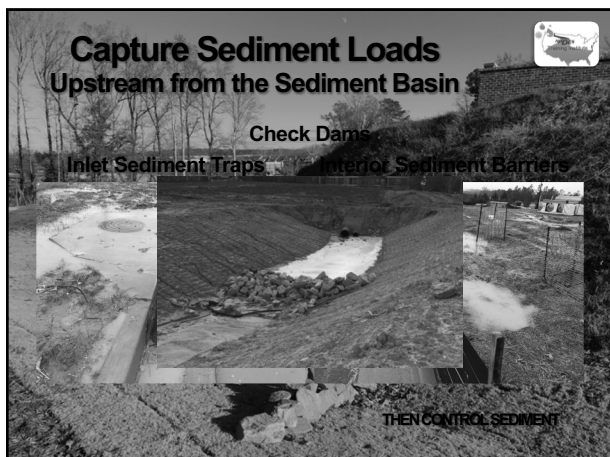
34



35



36



37



38



39



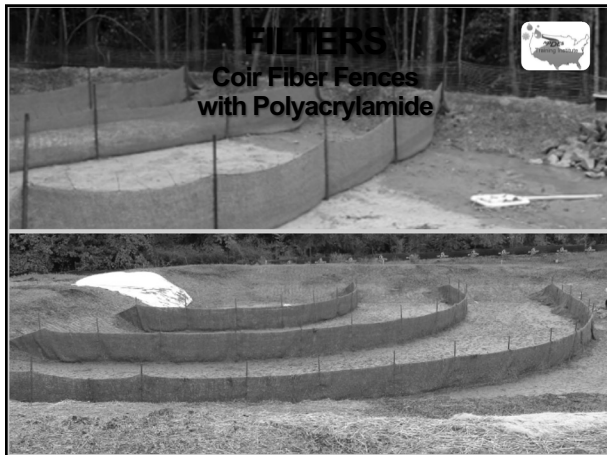
40



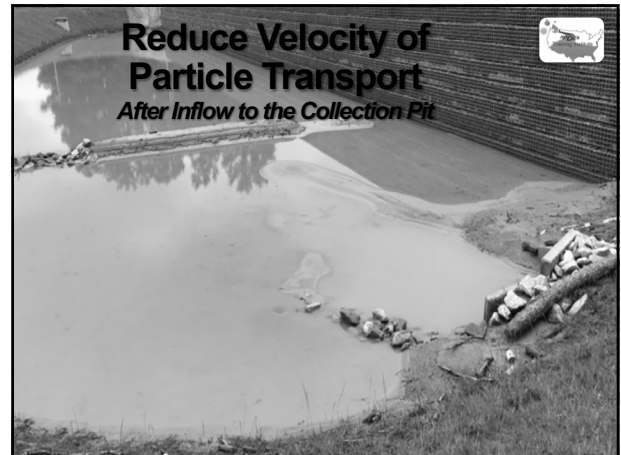
41



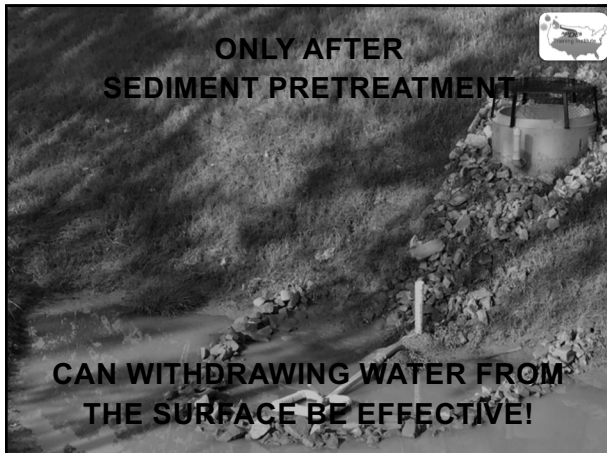
42



43



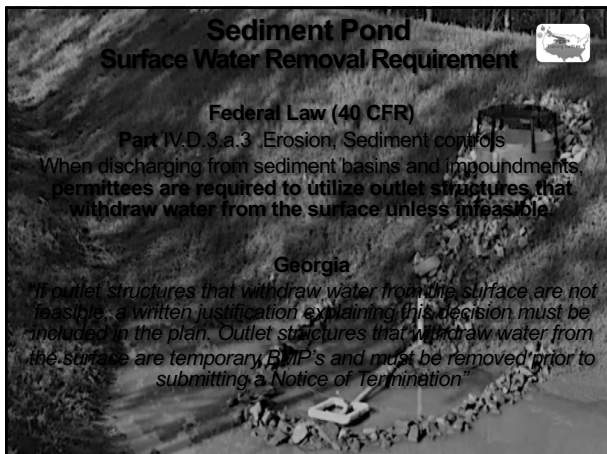
44



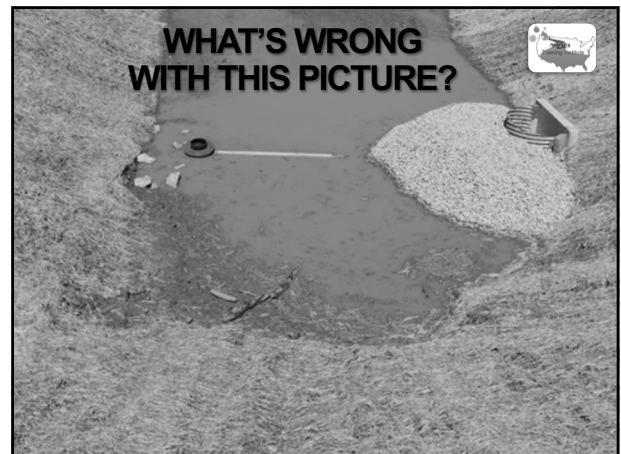
45



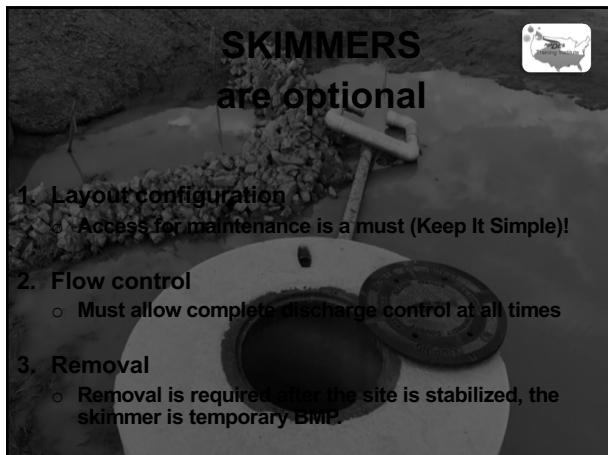
46



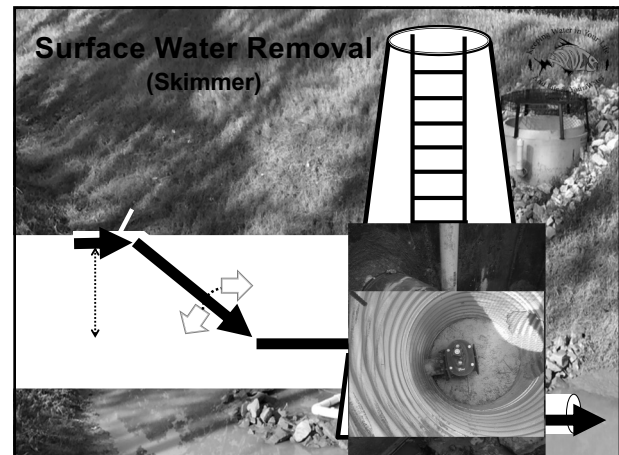
47



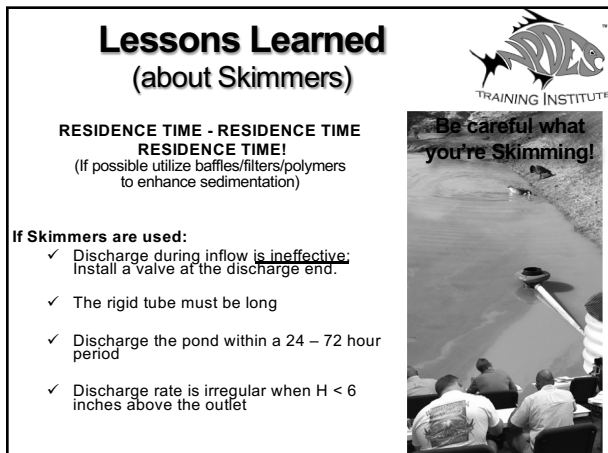
48



49



50



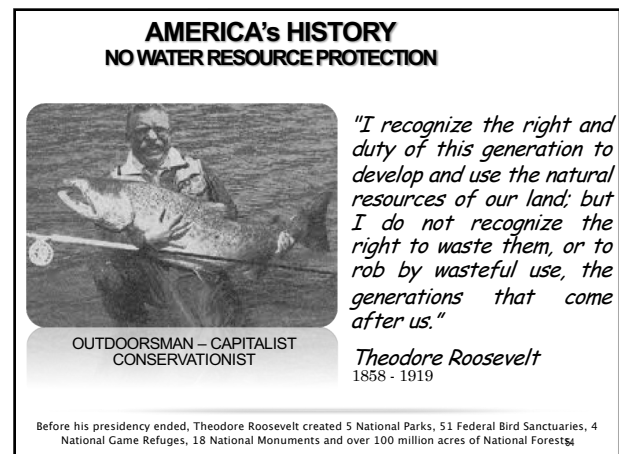
51



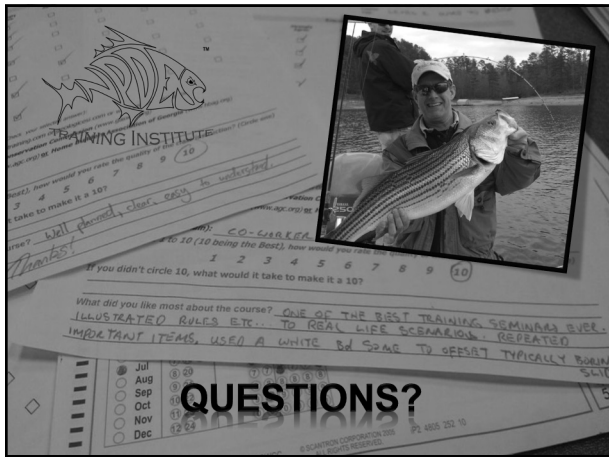
52



53



54



55