

Development Reference:
DEVELOPER'S NAME
CITY, STATE ZIP
PHONE (855) 123-4567
24-HOUR CONTACT:
JOHN DOE
(XXX)XXX-XXXX

General Erosion Control Notes:
TOTAL SITE AREA = 37.33 ACRES
TOTAL DISTURBED AREA FOR THIS PHASE = 26.59 ACRES
SEE SITE DESCRIPTION NOTES ON SHEET C-441.
SEE SITE MOUNTAIN MAP ON SHEET C-442 FOR SURROUNDING AREA AND SITE RECEIVING WATERS.
SEE GENERAL EROSION CONTROL NOTES PERTAINING TO SPECIFIC PHASES ON SHEET C-443.
SEE SEQUENCE OF CONSTRUCTION NOTES ON SHEET C-442.
SEE GENERAL NOTES FOR CRITICAL WORK ZONES ON SHEET C-442.
SEE SITE GRASSING AND VEGETATIVE SCHEDULE ON SHEET C-442.
SEE SHEETS C-441 THROUGH C-443 FOR ALL EROSION CONTROL NOTES.
SEE SHEETS C-441 TO C-443 FOR ALL SEDIMENT BASIN CALCULATIONS.
SEE SHEET C-444 FOR STORM DRAIN EXT. VELOCITIES AND STORM DRAIN OUTLET PROTECTION DETAILS.
SEE SHEET C-444 FOR ALL DIVERSION DIKE CALCULATIONS.
NO EXISTING WETLANDS ON SITE WILL BE IMPACTED BY THIS DEVELOPMENT. THERE ARE NO PROPOSED WETLANDS FOR THIS DEVELOPMENT.
SEE SHEET C-442 FOR ALL STATE WATERS WITHIN 200 FEET OF THE PROPOSED DEVELOPMENT.
SEE MOUNTAIN MAP ON SHEET C-442 FOR ALL OFFSITE LAKES, RESIDENTIAL AREAS, WETLANDS, ETC. THAT WILL BE AFFECTED BY THIS DEVELOPMENT.
EROSION CONTROL AND TREE PROTECTION MEASURES SHALL BE INSTALLED PRIOR TO ANY OTHER CONSTRUCTION ACTIVITY AND MAINTAINED UNTIL PERMANENT GROUND COVER IS ESTABLISHED.

EROSION CONTROL ACTIVITIES		EROSION CONTROL ACTIVITIES	
BT	Buffer Zone	BT	Buffer Zone
CD	Grass Dune (with Vegetation)	CD	Grass Dune (with Vegetation)
DF	Disturbed Area Stabilization with Seeding	DF	Disturbed Area Stabilization with Seeding
DS	Disturbed Area Stabilization with Sodding	DS	Disturbed Area Stabilization with Sodding
DU	Disturbed Area Stabilization with Seeding and Sodding	DU	Disturbed Area Stabilization with Seeding and Sodding
EM	Erosion Control Matting	EM	Erosion Control Matting
EP	Erosion Control Blanket	EP	Erosion Control Blanket
FS	Fabric Silt Fence	FS	Fabric Silt Fence
FT	Fabric Silt Fence (Type A)	FT	Fabric Silt Fence (Type A)
FT-1	Fabric Silt Fence (Type A) - 1st Row	FT-1	Fabric Silt Fence (Type A) - 1st Row
FT-2	Fabric Silt Fence (Type A) - 2nd Row	FT-2	Fabric Silt Fence (Type A) - 2nd Row
FT-3	Fabric Silt Fence (Type A) - 3rd Row	FT-3	Fabric Silt Fence (Type A) - 3rd Row
FT-4	Fabric Silt Fence (Type A) - 4th Row	FT-4	Fabric Silt Fence (Type A) - 4th Row
FT-5	Fabric Silt Fence (Type A) - 5th Row	FT-5	Fabric Silt Fence (Type A) - 5th Row
FT-6	Fabric Silt Fence (Type A) - 6th Row	FT-6	Fabric Silt Fence (Type A) - 6th Row
FT-7	Fabric Silt Fence (Type A) - 7th Row	FT-7	Fabric Silt Fence (Type A) - 7th Row
FT-8	Fabric Silt Fence (Type A) - 8th Row	FT-8	Fabric Silt Fence (Type A) - 8th Row
FT-9	Fabric Silt Fence (Type A) - 9th Row	FT-9	Fabric Silt Fence (Type A) - 9th Row
FT-10	Fabric Silt Fence (Type A) - 10th Row	FT-10	Fabric Silt Fence (Type A) - 10th Row
FT-11	Fabric Silt Fence (Type A) - 11th Row	FT-11	Fabric Silt Fence (Type A) - 11th Row
FT-12	Fabric Silt Fence (Type A) - 12th Row	FT-12	Fabric Silt Fence (Type A) - 12th Row
FT-13	Fabric Silt Fence (Type A) - 13th Row	FT-13	Fabric Silt Fence (Type A) - 13th Row
FT-14	Fabric Silt Fence (Type A) - 14th Row	FT-14	Fabric Silt Fence (Type A) - 14th Row
FT-15	Fabric Silt Fence (Type A) - 15th Row	FT-15	Fabric Silt Fence (Type A) - 15th Row
FT-16	Fabric Silt Fence (Type A) - 16th Row	FT-16	Fabric Silt Fence (Type A) - 16th Row
FT-17	Fabric Silt Fence (Type A) - 17th Row	FT-17	Fabric Silt Fence (Type A) - 17th Row
FT-18	Fabric Silt Fence (Type A) - 18th Row	FT-18	Fabric Silt Fence (Type A) - 18th Row
FT-19	Fabric Silt Fence (Type A) - 19th Row	FT-19	Fabric Silt Fence (Type A) - 19th Row
FT-20	Fabric Silt Fence (Type A) - 20th Row	FT-20	Fabric Silt Fence (Type A) - 20th Row
FT-21	Fabric Silt Fence (Type A) - 21st Row	FT-21	Fabric Silt Fence (Type A) - 21st Row
FT-22	Fabric Silt Fence (Type A) - 22nd Row	FT-22	Fabric Silt Fence (Type A) - 22nd Row
FT-23	Fabric Silt Fence (Type A) - 23rd Row	FT-23	Fabric Silt Fence (Type A) - 23rd Row
FT-24	Fabric Silt Fence (Type A) - 24th Row	FT-24	Fabric Silt Fence (Type A) - 24th Row
FT-25	Fabric Silt Fence (Type A) - 25th Row	FT-25	Fabric Silt Fence (Type A) - 25th Row
FT-26	Fabric Silt Fence (Type A) - 26th Row	FT-26	Fabric Silt Fence (Type A) - 26th Row
FT-27	Fabric Silt Fence (Type A) - 27th Row	FT-27	Fabric Silt Fence (Type A) - 27th Row
FT-28	Fabric Silt Fence (Type A) - 28th Row	FT-28	Fabric Silt Fence (Type A) - 28th Row
FT-29	Fabric Silt Fence (Type A) - 29th Row	FT-29	Fabric Silt Fence (Type A) - 29th Row
FT-30	Fabric Silt Fence (Type A) - 30th Row	FT-30	Fabric Silt Fence (Type A) - 30th Row
FT-31	Fabric Silt Fence (Type A) - 31st Row	FT-31	Fabric Silt Fence (Type A) - 31st Row
FT-32	Fabric Silt Fence (Type A) - 32nd Row	FT-32	Fabric Silt Fence (Type A) - 32nd Row
FT-33	Fabric Silt Fence (Type A) - 33rd Row	FT-33	Fabric Silt Fence (Type A) - 33rd Row
FT-34	Fabric Silt Fence (Type A) - 34th Row	FT-34	Fabric Silt Fence (Type A) - 34th Row
FT-35	Fabric Silt Fence (Type A) - 35th Row	FT-35	Fabric Silt Fence (Type A) - 35th Row
FT-36	Fabric Silt Fence (Type A) - 36th Row	FT-36	Fabric Silt Fence (Type A) - 36th Row
FT-37	Fabric Silt Fence (Type A) - 37th Row	FT-37	Fabric Silt Fence (Type A) - 37th Row
FT-38	Fabric Silt Fence (Type A) - 38th Row	FT-38	Fabric Silt Fence (Type A) - 38th Row
FT-39	Fabric Silt Fence (Type A) - 39th Row	FT-39	Fabric Silt Fence (Type A) - 39th Row
FT-40	Fabric Silt Fence (Type A) - 40th Row	FT-40	Fabric Silt Fence (Type A) - 40th Row
FT-41	Fabric Silt Fence (Type A) - 41st Row	FT-41	Fabric Silt Fence (Type A) - 41st Row
FT-42	Fabric Silt Fence (Type A) - 42nd Row	FT-42	Fabric Silt Fence (Type A) - 42nd Row
FT-43	Fabric Silt Fence (Type A) - 43rd Row	FT-43	Fabric Silt Fence (Type A) - 43rd Row
FT-44	Fabric Silt Fence (Type A) - 44th Row	FT-44	Fabric Silt Fence (Type A) - 44th Row
FT-45	Fabric Silt Fence (Type A) - 45th Row	FT-45	Fabric Silt Fence (Type A) - 45th Row
FT-46	Fabric Silt Fence (Type A) - 46th Row	FT-46	Fabric Silt Fence (Type A) - 46th Row
FT-47	Fabric Silt Fence (Type A) - 47th Row	FT-47	Fabric Silt Fence (Type A) - 47th Row
FT-48	Fabric Silt Fence (Type A) - 48th Row	FT-48	Fabric Silt Fence (Type A) - 48th Row
FT-49	Fabric Silt Fence (Type A) - 49th Row	FT-49	Fabric Silt Fence (Type A) - 49th Row
FT-50	Fabric Silt Fence (Type A) - 50th Row	FT-50	Fabric Silt Fence (Type A) - 50th Row
FT-51	Fabric Silt Fence (Type A) - 51st Row	FT-51	Fabric Silt Fence (Type A) - 51st Row
FT-52	Fabric Silt Fence (Type A) - 52nd Row	FT-52	Fabric Silt Fence (Type A) - 52nd Row
FT-53	Fabric Silt Fence (Type A) - 53rd Row	FT-53	Fabric Silt Fence (Type A) - 53rd Row
FT-54	Fabric Silt Fence (Type A) - 54th Row	FT-54	Fabric Silt Fence (Type A) - 54th Row
FT-55	Fabric Silt Fence (Type A) - 55th Row	FT-55	Fabric Silt Fence (Type A) - 55th Row
FT-56	Fabric Silt Fence (Type A) - 56th Row	FT-56	Fabric Silt Fence (Type A) - 56th Row
FT-57	Fabric Silt Fence (Type A) - 57th Row	FT-57	Fabric Silt Fence (Type A) - 57th Row
FT-58	Fabric Silt Fence (Type A) - 58th Row	FT-58	Fabric Silt Fence (Type A) - 58th Row
FT-59	Fabric Silt Fence (Type A) - 59th Row	FT-59	Fabric Silt Fence (Type A) - 59th Row
FT-60	Fabric Silt Fence (Type A) - 60th Row	FT-60	Fabric Silt Fence (Type A) - 60th Row
FT-61	Fabric Silt Fence (Type A) - 61st Row	FT-61	Fabric Silt Fence (Type A) - 61st Row
FT-62	Fabric Silt Fence (Type A) - 62nd Row	FT-62	Fabric Silt Fence (Type A) - 62nd Row
FT-63	Fabric Silt Fence (Type A) - 63rd Row	FT-63	Fabric Silt Fence (Type A) - 63rd Row
FT-64	Fabric Silt Fence (Type A) - 64th Row	FT-64	Fabric Silt Fence (Type A) - 64th Row
FT-65	Fabric Silt Fence (Type A) - 65th Row	FT-65	Fabric Silt Fence (Type A) - 65th Row
FT-66	Fabric Silt Fence (Type A) - 66th Row	FT-66	Fabric Silt Fence (Type A) - 66th Row
FT-67	Fabric Silt Fence (Type A) - 67th Row	FT-67	Fabric Silt Fence (Type A) - 67th Row
FT-68	Fabric Silt Fence (Type A) - 68th Row	FT-68	Fabric Silt Fence (Type A) - 68th Row
FT-69	Fabric Silt Fence (Type A) - 69th Row	FT-69	Fabric Silt Fence (Type A) - 69th Row
FT-70	Fabric Silt Fence (Type A) - 70th Row	FT-70	Fabric Silt Fence (Type A) - 70th Row
FT-71	Fabric Silt Fence (Type A) - 71st Row	FT-71	Fabric Silt Fence (Type A) - 71st Row
FT-72	Fabric Silt Fence (Type A) - 72nd Row	FT-72	Fabric Silt Fence (Type A) - 72nd Row
FT-73	Fabric Silt Fence (Type A) - 73rd Row	FT-73	Fabric Silt Fence (Type A) - 73rd Row
FT-74	Fabric Silt Fence (Type A) - 74th Row	FT-74	Fabric Silt Fence (Type A) - 74th Row
FT-75	Fabric Silt Fence (Type A) - 75th Row	FT-75	Fabric Silt Fence (Type A) - 75th Row
FT-76	Fabric Silt Fence (Type A) - 76th Row	FT-76	Fabric Silt Fence (Type A) - 76th Row
FT-77	Fabric Silt Fence (Type A) - 77th Row	FT-77	Fabric Silt Fence (Type A) - 77th Row
FT-78	Fabric Silt Fence (Type A) - 78th Row	FT-78	Fabric Silt Fence (Type A) - 78th Row
FT-79	Fabric Silt Fence (Type A) - 79th Row	FT-79	Fabric Silt Fence (Type A) - 79th Row
FT-80	Fabric Silt Fence (Type A) - 80th Row	FT-80	Fabric Silt Fence (Type A) - 80th Row
FT-81	Fabric Silt Fence (Type A) - 81st Row	FT-81	Fabric Silt Fence (Type A) - 81st Row
FT-82	Fabric Silt Fence (Type A) - 82nd Row	FT-82	Fabric Silt Fence (Type A) - 82nd Row
FT-83	Fabric Silt Fence (Type A) - 83rd Row	FT-83	Fabric Silt Fence (Type A) - 83rd Row
FT-84	Fabric Silt Fence (Type A) - 84th Row	FT-84	Fabric Silt Fence (Type A) - 84th Row
FT-85	Fabric Silt Fence (Type A) - 85th Row	FT-85	Fabric Silt Fence (Type A) - 85th Row
FT-86	Fabric Silt Fence (Type A) - 86th Row	FT-86	Fabric Silt Fence (Type A) - 86th Row
FT-87	Fabric Silt Fence (Type A) - 87th Row	FT-87	Fabric Silt Fence (Type A) - 87th Row
FT-88	Fabric Silt Fence (Type A) - 88th Row	FT-88	Fabric Silt Fence (Type A) - 88th Row
FT-89	Fabric Silt Fence (Type A) - 89th Row	FT-89	Fabric Silt Fence (Type A) - 89th Row
FT-90	Fabric Silt Fence (Type A) - 90th Row	FT-90	Fabric Silt Fence (Type A) - 90th Row
FT-91	Fabric Silt Fence (Type A) - 91st Row	FT-91	Fabric Silt Fence (Type A) - 91st Row
FT-92	Fabric Silt Fence (Type A) - 92nd Row	FT-92	Fabric Silt Fence (Type A) - 92nd Row
FT-93	Fabric Silt Fence (Type A) - 93rd Row	FT-93	Fabric Silt Fence (Type A) - 93rd Row
FT-94	Fabric Silt Fence (Type A) - 94th Row	FT-94	Fabric Silt Fence (Type A) - 94th Row
FT-95	Fabric Silt Fence (Type A) - 95th Row	FT-95	Fabric Silt Fence (Type A) - 95th Row
FT-96	Fabric Silt Fence (Type A) - 96th Row	FT-96	Fabric Silt Fence (Type A) - 96th Row
FT-97	Fabric Silt Fence (Type A) - 97th Row	FT-97	Fabric Silt Fence (Type A) - 97th Row
FT-98	Fabric Silt Fence (Type A) - 98th Row	FT-98	Fabric Silt Fence (Type A) - 98th Row
FT-99	Fabric Silt Fence (Type A) - 99th Row	FT-99	Fabric Silt Fence (Type A) - 99th Row
FT-100	Fabric Silt Fence (Type A) - 100th Row	FT-100	Fabric Silt Fence (Type A) - 100th Row

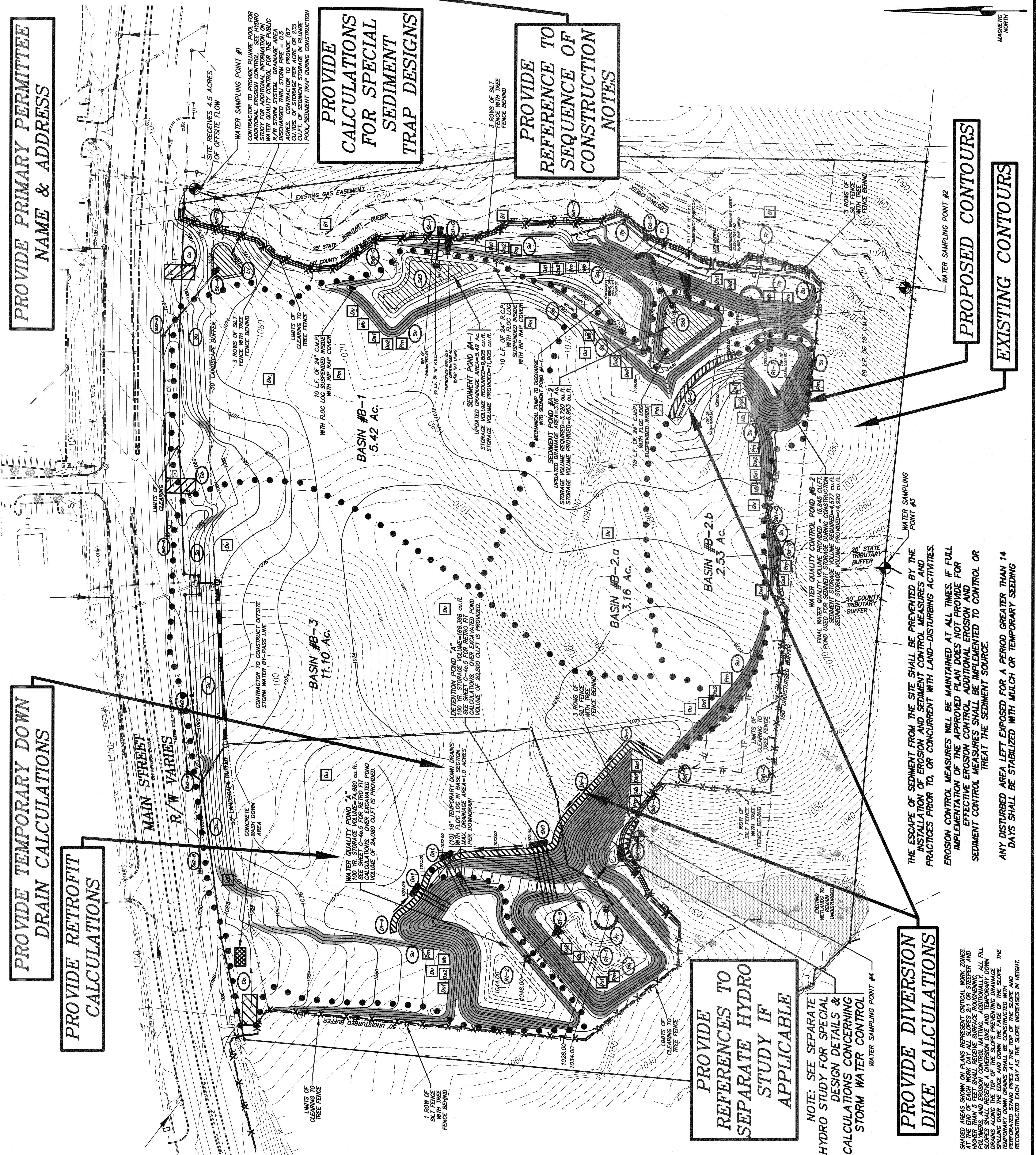
WATER SAMPLING POINT
SHADE AREA DENOTES INSTALLATION OF SILENT MATING

IN CONCENTRATED FLOW AREAS, ALL SLOPES STEEPER THAN 2:1 AND WITH HEIGHTS TO 10 FEET OR GREATER, AND CUTS SHALL BE STABILIZED WITH THE APPROPRIATE EROSION CONTROL MATTING OR BLANKET.

0' 20' 40' 60' 80' 100' 120' 140' 160' 180' 200' 220' 240'

SCALE: 1" = 60'

MAGNETIC NORTH



SHADE AREAS SHOWN ON PLANS REPRESENT CRITICAL WORK ZONES. AT THE END OF EACH WORK DAY, ALL SLOPES 2:1 OR STEEPER, AND ALL EXPOSED EROSION CONTROL MATTING, ADDITIONALLY, ALL FULL SLOPES SHALL RECEIVE A DIVERSION DIKE AND TEMPORARY DOWN DRAIN. THE DIVERSION DIKE SHALL BE CONSTRUCTED WITH THE TEMPORARY DOWN DRAIN SHALL BE CONSTRUCTED WITH PERFORATED STAND PIPES AT THE TOP OF THE SLOPE AND RECONSTRUCTED EACH DAY AS THE SLOPE INCREASES IN HEIGHT.