

Development Reference:

DESIGN PROFESSIONAL:
SOUTHERN CIVIL ENGINEERS, INC.
100 SOUTH ATLANTA ROAD, SUITE 100
ALPHARETTA, GEORGIA 30022
PHONE: (770) 619-4280

24-HOUR CONTACT:
JOHN DOE
(XXX) XXX-XXXX



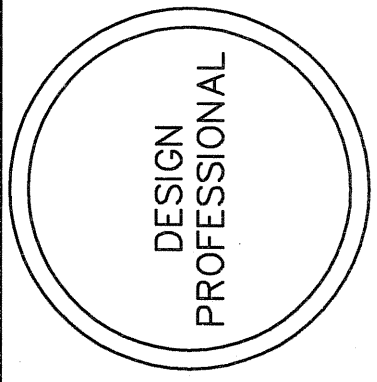
SCE
SOUTHERN CIVIL ENGINEERS

3010 Royal Blvd. South
Suite 100
Alpharetta, GA 30022
(770) 619-4280
www.sce-atlanta.com

Revisions
Date
Description

Date

Description



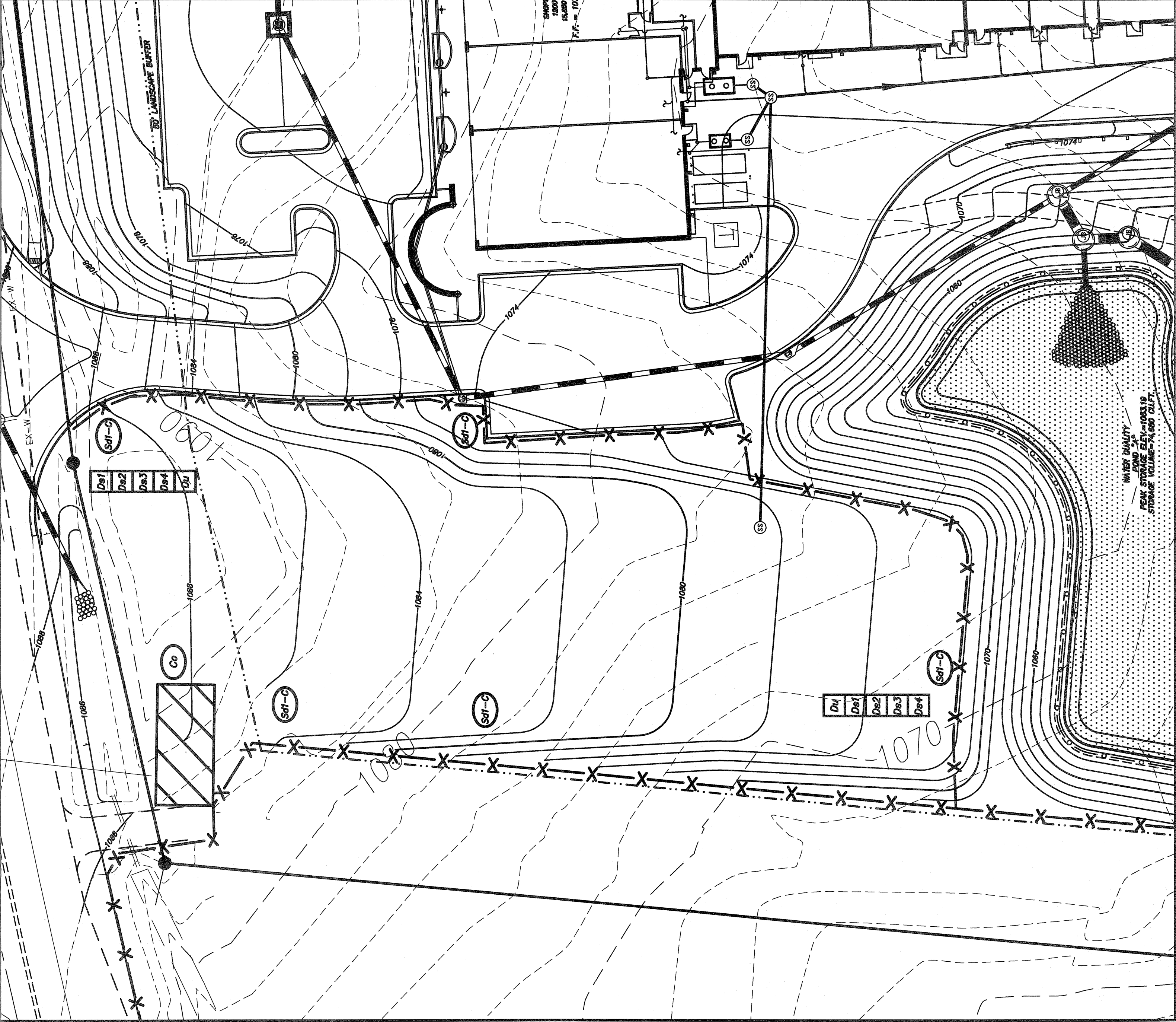
LEVEL II
CERTIFICATION
NUMBER

SHOPPING CENTER
A Development By
DEVELOPER'S NAME
LAND LOT 2 OF THE 27TH DISTRICT
CITY OF 2, 3 COUNTY, GEORGIA

Drawn SCE	Designer SCE	Date 2019
Sheet Title E.S.&P. CONTROL PLAN FOR OUT PARCELS PLAN		
Drawing Number C-4c.1		



REFERENCE EROSION
CONTROL ACTIVITY



TYP. OUT PARCELS
EROSION CONTROL PLAN

INSTALL TEMPORARY DOWN DRAINS AND
PERMANENT ENERGY DISSIPATION DEVICES
FOR DOWN SLOPES IF REQUIRED TO
PREVENT RILLS AND EROSION.

NOTE:
THE EROSION CONTROL MEASURES SHOWN FOR THE
TYPICAL LOTS ARE THE SUGGESTED MINIMUM BMPs. THE
CONTRACTOR SHALL MANAGE THE DISCHARGE OF STORM
WATER FROM THE SITE IN ACCORDANCE WITH THE STATE
OF GEORGIA DEPARTMENT OF NATURAL RESOURCES
ENVIRONMENTAL PROTECTION DIVISION, GENERAL PERMIT
NO. GAR100003. THE CONTRACTOR SHALL BE
RESPONSIBLE FOR CONDUCTING THE STORM WATER
PRACTICES IN ACCORDANCE WITH THE PERMIT. THESE
EROSION CONTROL DOCUMENTS ARE MEANT TO BE
WORKING DOCUMENTS THAT SHALL BE MAINTAINED AT THE
SITE OF CONSTRUCTION ACTIVITIES AT ALL TIMES
THROUGHOUT THE PROJECT.

NOTE:
FOR LOTS ABUTTING AND DRAINING TOWARDS STATE
WATERS, CONTRACTOR SHALL INSTALL TWO ROWS OF TYPE
'C' SILT FENCE ADJACENT TO AND OUTSIDE OF BUFFERS.

THE ESCAPE OF SEDIMENT FROM THE SITE SHALL BE
PREVENTED BY THE INSTALLATION OF EROSION AND
SEDIMENT CONTROL MEASURES AND PRACTICES PRIOR
TO, OR CONCURRENT WITH LAND-DISTURBING ACTIVITIES.
EROSION CONTROL MEASURES WILL BE MAINTAINED AT
ALL TIMES. IF FULL IMPLEMENTATION OF THE APPROVED
PLAN DOES NOT PROVIDE FOR EFFECTIVE EROSION
CONTROL, ADDITIONAL EROSION AND
SEDIMENT CONTROL MEASURES SHALL BE IMPLEMENTED
TO CONTROL OR TREAT THE SEDIMENT SOURCE.
ANY DISTURBED AREA LEFT EXPOSED FOR A PERIOD
GREATER THAN 14 DAYS SHALL BE STABILIZED WITH
MULCH OR TEMPORARY SEEDING

