



---

---

---

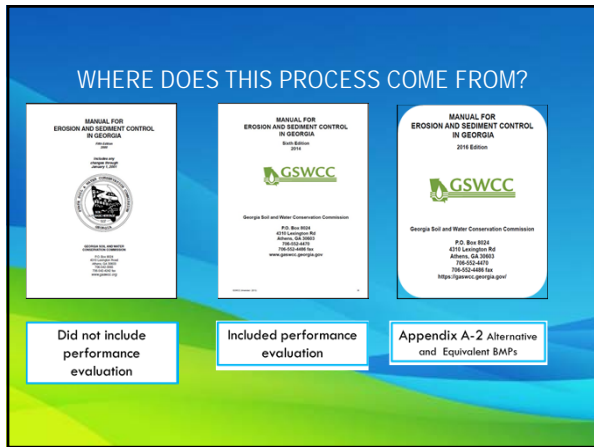
---

---

---

---

---



---

---

---

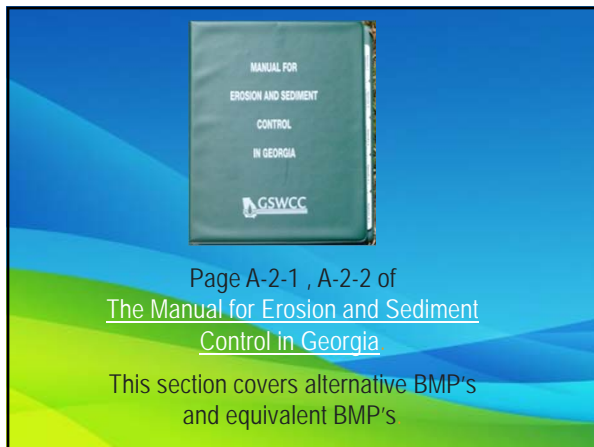
---

---

---

---

---



---

---

---

---

---

---

---

---

## ALTERNATIVE BMP'S

- An alternative BMP is a BMP that can be used on a case by case (plan by plan) basis on an erosion and sediment control plan without having gone through the equivalent BMP process to be on an approved list.
  - Requires the BMP to be certified by a design professional on each individual plan.
  - Requires the BMP to follow a four step process, [alternative BMP guidance document](#).

---

---

---

---

---

---

---

---

## ALTERNATIVE BMP

- Step 1
  - One page summary detailing why the alternative BMP is equivalent or superior to the conventional BMPs found in the "Manual for Erosion and Sedimentation Control in Georgia".
    - Example Conventional rock check dam compared to a rolled cloth check dam
    - This is typically prepared by the product manufacturer or distributor

---

---

---

---

---

---

---

---

## ALTERNATIVE BMP

- Step 2
  - Documented side by side testing (alternative BMP vs. conventional BMP) using the appropriate design requirements and specifications contained in the Manual.  
Example:
    - This can be done by comparing testing that was done on a conventional BMP to a product that is being submitted.
    - This can be done on a manufacturers test site

---

---

---

---

---

---

---

---

### ALTERNATIVE BMP

- Step 3
  - Proof that the alternative BMP was previously installed and worked under conditions comparable to the environmental conditions of the proposed site. This can be documented with photographs.
    - This could be done on individual manufactures test sites

---

---

---

---

---

---

---

---

### ALTERNATIVE BMP

- Step 4
  - All specifications including the design requirements and the procedures for proper installation and maintenance.
    - This is typically prepared by product manufacturer.

---

---

---

---

---

---

---

---

### EQUIVALENT BMP'S

- An Equivalent BMP is an erosion and sediment control BMP that is applying for the approved list for Erosion and Sediment Control in the state of Georgia.
  - Requires that it is used on three different NOI'd sites.
  - Requires it to follow the alternative BMP process.
  - Requires additional paperwork
    - [Equivalent BMP Pre-notice form](#)
    - [Equivalent BMP Certification form](#)
    - [Equivalent BMP Application](#)
  - Requires a Notice of Termination (NOT) to be filed on each site for the test site to complete testing  
(testing a BMP on a permitted site does not exempt the site from enforcement actions)

---

---

---

---

---

---

---

---

### EQUIVALENT BMP PRE-NOTICE

- Specify on the required checklist that accompanies the Notice of Intent form that the project includes an alternative BMP that will be included on an application for the Equivalent BMP List.
- A Notice of Intent informs the EPD and Local Issuing Authority that a land disturbing activity is taking place.
  - An NOI is required for sites one acre or greater or within a common development
    - Most often the NOI is filled out by the primary permittee
  - The checklist is determined by the type of project a person is developing
    - Standalone
    - Infrastructure
    - Common Development

---

---

---

---

---

---

---

---

---

---

### EQUIVALENT BMP PRE-NOTICE

- Inform GSWCC of the intent to apply by sending a digital copy of the approved ES&PC plan and a copy of the checklist to GSWCC when each NOI is filed with EPD.  
(In order to have an approved plan that is in compliance, the alternative BMP documentation must have fully been completed.)

---

---

---

---

---

---


---

---

---

---

### EQUIVALENT BMP PRE-NOTICE



**Equivalent BMP Application  
Pre-notice**

(Name of person or persons)

- Provide a copy of the required checklist with a copy of the Notice of Intent form for each site on the disk or thumb drive.
- Provide a copy of the plans, by disk or thumb drive to the GSWCC/Urban Program when each NOI is filed with the EPD.

Date submitted: \_\_\_\_\_ Signature of proposer: \_\_\_\_\_

Please label the disk or thumb drive with the title submitted and project name. Project name shall never be the same. The contact person should be the same person listed on the following address:

GSWCC/Urban Program  
4939 Longhorn Road  
Harris, TX 77057

If you have any questions contact the GSWCC/Urban program at 3-786-7527/4676

---

---

---

---

---

---

---

---

---

---

## EQUIVALENT BMP APPLICATION

- Once the Project has been completed and Notice of Termination has been filed, Submit the certification form in the application package to the GSWCC per each of the three test sites.
- Notice of Termination submittal tells the Local Issuing Authority and the Environmental Protection Division that a land disturbing activity has achieved final stabilization.
- Final stabilization is defined as all soil disturbing activities at the site have been completed, and that for unpaved areas and areas not covered by permanent structures, 100% of the soil surface is uniformly covered in permanent vegetation with a density of 70% or greater.....

---

---

---

---

---

---

---

---

---

---

---

---

## EQUIVALENT BMP APPLICATION

- Application to be on the Equivalent BMP List and a sample of the product.

---

---

---

---

---

---

---

---

---

---

---

---

## EQUIVALENT BMP APPLICATION

- Provide Alternative BMP submittal information and evidence of repeatable bench and field testing.
- Only Approved ASTM standards will be accepted. Working test methods will not be accepted.
- Notice of Termination form
  - One for each time the BMP was tested

---

---

---

---

---

---

---

---

---

---

---

---

### EQUIVALENT BMP APPLICATION

- Certification form signed by two individuals
  - (a Level 1a or 1b and a Level 2 certified design professional)
- Installation photos
  - (one for each time the BMP was used)
  - Make sure product is installed per the details
- After Storm Event Photos
  - (for each time the BMP was used)
- Any post storm event inspection records as well as inspection and enforcement records made by any federal, state, or local regulatory agency related to this specific BMP on the site.
  - If there is a Local Issuing Authority (LIA), they will do a majority of the inspections
  - If there is no LIA, EPD does the inspections.
- Completed BMP application submitted to the GSWCC each time the BMP was tested.

---

---

---

---

---

---

---

---

---

---

---

---

### EQUIVALENT BMP CERTIFICATION FORM

The image shows a thumbnail of the 'Equivalent BMP Certification Form' dated May 2017. The form includes fields for:
 

- Name (Last, First, Middle Initial)
- Address (Street, City, State, Zip)
- Phone (Area Code, Number)
- Signature (Name, Title)
- Notary Public (Name, Title, Commission Number)

 It also contains a checklist of 9 items for certification, such as 'Name of local EA or EP person certifying product' and 'Name of local EA or EP person certifying product'.

---

---

---

---

---

---

---

---

---

---

---

---

### APPENDIX A-2: JOINING THE EQUIVALENT BMP LIST

- The Equivalent BMP List became effective January 1, 2016.
- Applications for BMPs to be included on the Equivalent BMP list will be based on NOI'S submitted on or after January 1, 2016.
- GSWCC's approval of a BMP, however, does not ensure GDOT's adoption of that item into their QPL, design policies, or procedures.
- As of January 1, 2016, any product that seeks to be on the GDOT QPL List must first go through the Equivalent BMP process.

---

---

---

---

---

---

---

---

---

---

---

---

GEORGIA SOIL AND WATER CONSERVATION COMMISSION

- Contact Info
  - Benton Ruzowicz (bruzowicz@gaswcc.ga.gov) CPESC, CESSWI
  - Urban Program Manager
  - Georgia Soil and Water Conservation Commission
  - 4310 Lexington Road, Athens, GA 30603
  - (706) 552-4475 (phone)
  - (706) 552-4486 (fax)
  - www.gaswcc.org

---

---

---

---

---

---

---

---